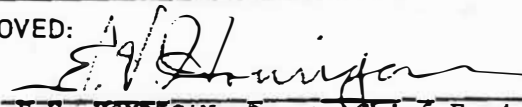
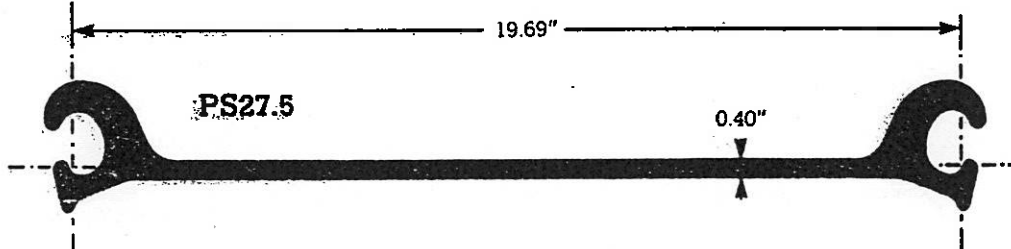
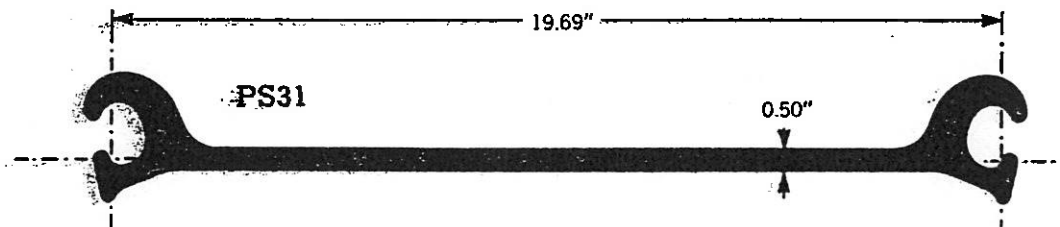
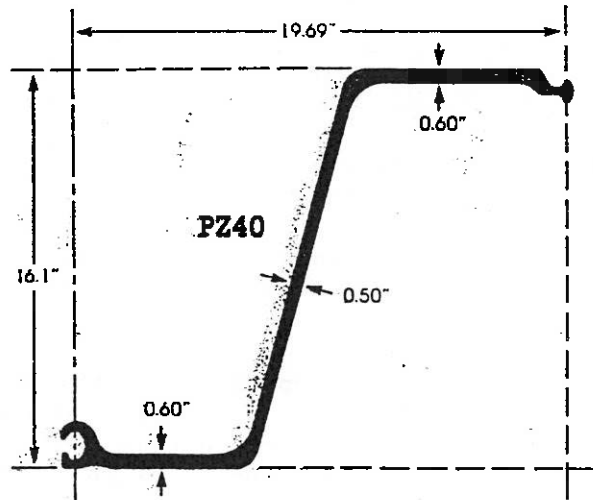
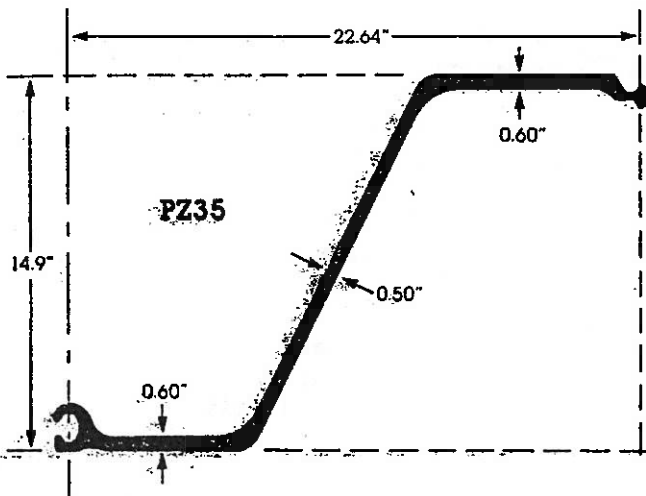
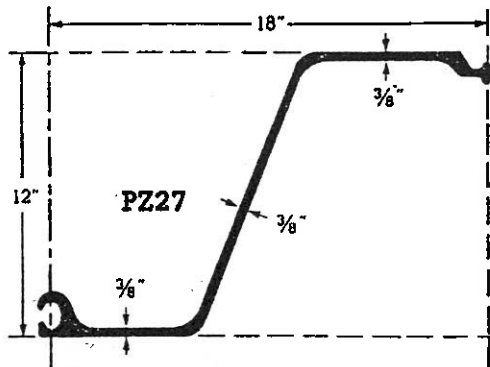
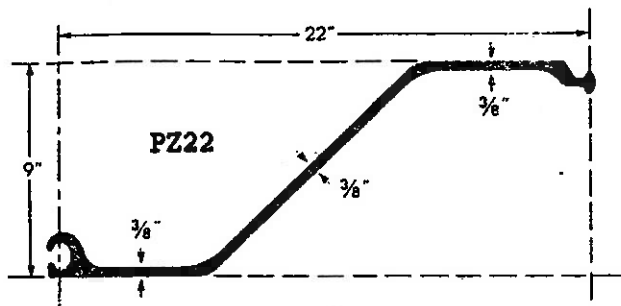


TO: SUPERSEDED BY EB 97-020 EFFECTIVE 4/4/97	ENGINEERING INSTRUCTION NEW YORK STATE DEPARTMENT OF TRANSPORTATION SUBJECT: BRIDGE DESIGN MANUAL; DESIGN CRITERIA FOR BRIDGES; STEEL SHEET PILING DESIGN Subject Code: 7.35 - 6 - 12
Distribution: 31 <input checked="" type="checkbox"/> Main Office 33 <input checked="" type="checkbox"/> Regions 34 <input checked="" type="checkbox"/> Special	Code: <u>84 - 52</u>
APPROVED:  <u>E.V. HOURIGAN, Deputy Chief Engineer (Structures)</u>	Date: <u>Oct. 12, 1984</u> Supersedes:

It has come to our attention that quite often designers are specifying steel sheet piling sections which are no longer manufactured.

All designers should take note that there is only one regular domestic manufacturer of steel sheet piling - The Bethlehem Steel Corp. of Bethlehem, PA.

Bethlehem Steel Corp. manufactures six separate sections of steel sheet piling, all of which are listed on the attached plate. Also listed are the properties of each section. Designers are to be guided accordingly when designing steel sheet piling.



Properties and Weights

Section Designation	Area sq in.	Nominal Width, in.	Weight in Pounds		Moment of Inertia, in. ⁴	Section Modulus, in. ³		Surface Area, sq ft per lin ft of bar	
			Per lin ft of bar	Per sq ft of wall		Single Section	Per lin ft of wall	Total Area	Nominal Coating Area*
PZ22	11.86	22	40.3	22.0	154.7	33.1	18.1	4.94	4.48
PZ27	11.91	18	40.5	27.0	276.3	45.3	30.2	4.94	4.48
PZ35	19.41	22.64	66.0	35.0	681.5	91.4	48.5	5.83	5.37
PZ40	19.30	19.69	65.6	40.0	805.4	99.6	60.7	5.83	5.37
PS27.5	13.27	19.69	45.1	27.5	5.3	3.3	2.0	4.48	3.65
PS31	14.96	19.69	50.9	31.0	5.3	3.3	2.0	4.48	3.65

Notes:

*Excludes socket interior and ball of interlock.