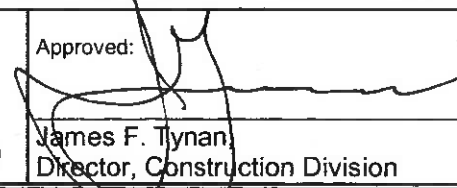


To:		MODIFIED BY EI 08-017 EFFECTIVE 4/15/08		SUPERSEDED BY EI 11-016 EFFECTIVE 1/12/12		York State Department of Transportation ENGINEERING		EI 07-006				
						INSTRUCTION						
Title: STANDARD SPECIFICATIONS - SECTION 619 WORK ZONE TRAFFIC CONTROL												
Distribution:			<input checked="" type="checkbox"/> Manufacturers (18) <input checked="" type="checkbox"/> Local Govt. (31) <input checked="" type="checkbox"/> Agencies (32)			<input checked="" type="checkbox"/> Surveyors (33) <input checked="" type="checkbox"/> Consultants (34) <input checked="" type="checkbox"/> Contractors (39) <input type="checkbox"/> _____ ()			Approved:  James F. Tynan, Director, Construction Division		2-16-07 Date	

ADMINISTRATIVE INFORMATION:

- This Engineering Instruction (EI) is effective beginning with projects submitted for the letting of 09/06/07.
- This EI supersedes EIs 85-010, 89-022, 92-039, 93-022, 94-017, 95-005, 95-041, 98-039, 99-034, 05-030 and 06-016.
- This EI supersedes Section 619 of the Construction Supervision Manual.
- The revisions issued with this EI will be incorporated into a future update of the Standard Specifications.

PURPOSE:

This EI issues a revised Section 619 of the Standard Specifications of May 4, 2006.

TECHNICAL INFORMATION:

- Minor revisions are also made to §490-5, §635-3.05 and §640-3.02 in order to resolve outdated references to Section 619.
- The title of Section 619 has been changed to Work Zone Traffic Control to better describe the current model of providing safe and efficient movement of traffic through or around work zones, and to protect the workers and the public from any construction operations within the work zones.
- Material requirements were moved to Section 729 Temporary Traffic Control Devices issued via EI 07-001, Section 730 Signs and Delineators issued via EI 07-004 and §704-05 Precast Concrete Barrier issued via EI 07-005
- The lump sum contract pay items for Basic M&PT, Construction Signs and Arrow Boards have been consolidated into the Basic Work Zone Traffic Control item.
- The contract pay items for Lighting for Barricades and Lighting for Barrier have been eliminated.
- The contract pay item for Opening Highway to Traffic Prior to Contract Acceptance was eliminated.
- The specification now uses the term Temporary Pavement Markings rather than Short Term Pavement Markings and the term Interim Pavement Markings rather than Construction Zone Pavement Markings.
- New Standard Specification contract pay items were created for:
 - Remove/Cover Existing Pavement Markings
 - Temporary Pavement Markings
 - Interim Pavement Markings
 - Temporary Impact Attenuator
 - Temporary Business Signs
 - Pinned Temporary Concrete Barrier (TCB).
 - Traffic Control Supervisor.
- Some Contract pay items that previously were special specifications were incorporated into the Standard Specification.

IMPLEMENTATION:

- Main Office Design Quality Assurance Bureau will insert the standard specification shelf note into contract proposals beginning with projects submitted for the letting of 09/06/07.
- Disapproved Specifications.
 - The following standard contract pay items are disapproved:

619.02	Construction Signs
619.0303	Flashing Arrow Boards
619.0413	Type III Construction Barricades
619.0502	Lighting for Construction Barricades
619.10	Mailboxes
619.1101	Opening Highway to Traffic Prior to Contract Acceptance
619.17	Temporary Concrete Barrier
619.18	Temporary Box Beam Barrier
619.2001	Tubular Markers White Tape
619.21xx	Construction Zone Pavement Markings
 - The following standard contract pay item is renamed:

619.01	Basic Work Zone Traffic Control
--------	---------------------------------
 - The following standard contract pay items are approved:

619.0101	Basic Work Zone Traffic Control (Daily Operations)
619.04	Type III Construction Barricades (Each)
619.07	Temporary Business Signs
619.08xx	Remove Existing Pavement Marking
619.08xx	Cover Existing Pavement Marking
619.09xx	Temporary Pavement Markings
619.10xxxx	Interim Pavement Markings
619.11xyyy	Portable Variable Message Signs (PVMS)
619.12	Temporary Glare Screen
619.1614nn	Modify Existing Traffic Signal Equipment (Temporary)
619.17xx	Temporary Concrete Barrier
619.18xx	Temporary Impact Attenuator
619.20	Interim Tubular Markers
619.21	Temporary Sand Barrel Module
619.23	Vehicle Arresting Barrier
619.24	Nighttime Operations
619.25	Traffic Control Supervisor
619.26	Pavement Patching, Winter
619.27	Mailboxes
 - The following special specification contract pay items are disapproved:

11619.0001	Protective Safety Shielding
11619.000101	Relocate Chain Link Fence on TCB
11619.000102	Remove/Dispose of Existing TCB
02619.0101	Basic Maintenance and Protection of Traffic, Option A
08619.01	Maintenance and Protection of Traffic
63619.01	Maintenance and Protection of Traffic for Emergency/Standby
63619.01xx	Maintenance and Protection of Traffic for Emergency/Standby
15619.0101	Maintenance and Protection of Traffic
01619.010101	Maintenance and Protection of Traffic
01619.010102	Maintenance and Protection of Traffic
02619.0102	Basic Maintenance and Protection of Traffic, Option B
03619.010301	Maintenance and Protection of Traffic

El 07-006 Page 3 of 7

03619.010701	Special Maintenance and Protection of Traffic
07619.0110	Maintenance and Protection of Traffic for Bridge Inspection
10619.0111	Maintenance and Protection of Traffic
07619.0120	Overtime for MPT (Hourly)
10619.0121	Maintenance and Protection of Traffic
10619.012101	Maintenance and Protection of Traffic
07619.0130	MPT for Bridge Inspection (Daily)
07619.0140	Overtime for MPT for Bridge Inspection (Hourly)
01619.0150	Establishment and Removal of Contingent Detour
08619.0193xx	Daily Maintenance and Protection of Traffic
11619.0193xx	Maintenance and Protection of Traffic
63619.0193	Flaggers for Emergency/Standby
15619.0194	Lane Rental Payments and Assessments - Daily
15619.0195	Lane Rental Payments and Assessments - Hourly
07619.0198	Maintenance and Protection of Traffic for Highway Cleanup
08619.0199xx	Daily Maintenance and Protection of Traffic
08619.02	Construction Signs
09619.0201	Temporary Business Signs & Supports
03619.020301	Flagger, Bridge Inspection
03619.020701	Flagger, Bridge Inspection
04619.0294	Temporary Signal Ahead Warning Signs
01619.0297	Construction Signs
15619.0301	Flashing Arrow Boards
03619.0303	Shadow Vehicle
08619.0303	Flashing Arrow Boards
63619.0303xx	Flashing Arrow Boards for Emergency/Standby
11619.0324	SCI-100GM Impact Attenuator
63619.0413xx	Type III Construction Barricades or Emergency/Standby
10619.0494	Boat for Inspection
63619.0502xx	Lighting for Construction Barricades, Emergency Standby
08619.0580	Lighting for Drums
08619.0580	Lighting for Construction Barricades
10619.0589	Lighting for Temporary Steel Barrier
11619.0598	Lighting for Temporary Concrete Barrier
10619.0599	Lighting for Temporary Concrete Barrier
06619.06	Interim Structures and Approaches
10619.06	Temporary LIRR Platform
11619.0601	Temporary Decking
11619.0602	Vesey Street Temporary Pedestrian Bridge
11619.060001	Fender Dolphins and Berthing Berms
11619.060002	Buoyant Beacons
11619.060003	Fender Maintenance System
11619.060004	Anchors for Temporary Fender System
11619.060005	Permanent Casings for Fender System Anchors
11619.060007	Tugboat Assistance Program
11619.0610	Pilot Borings
27619.0630	Temporary Timber Lighted Barricades
09619.0601	Temporary Structures
01619.060101	Temporary Structures
01619.060102	Temporary Structures
619.060502	Temporary Structures
619.060503	Temporary Structures
619.060504	Temporary Structures
619.060505	Temporary Structures

EI 07-006 Page 4 of 7

619.060601	Temporary Structures
619.060602	Temporary Structures
619.060603	Temporary Structures
619.060604	Temporary Structures
619.060605	Temporary Structures
619.060805	Temporary Structures
619.060806	Temporary Structures
04619.0610	Temporary Structures, Lighting Required
09619.0699	Temporary Structures
01619.07	Plastic Construction Drums
08619.10	Relocate US Postal Collection Box
05619.1002	Temporary Impact Attenuator System
08619.13	Temporary Traffic Signals
08619.13xx	Temporary Traffic Signals
07619.131001	Trailer Mounted Temporary Traffic Signals
08619.131001	Trailer Mounted Temporary Traffic Signals
19619.13	LED Red Ahead Sign
63619.13100x	Trailer Mounted Temporary Traffic Signals for Emergency/Standby
07619.1313	Removable Raised Reflectorized Pavement Markers
63619.132001	Temporary Traffic Signal Operations for Emergency/Standby
10619.1330	Temporary Traffic Signal Detectors
09619.14	LED Red Ahead Sign
63619.15xx	Pavement Delineation
15619.1503	Short Term Pavement Markings
15619.1504	Short Term Pavement Markings
03619.1601	Temporary Modification of Traffic Signal Equipment
15619.1604	Maintain Traffic Signal Equipment (Non-Restricted Hwy)
15619.1605	Maintain Traffic Signal Equipment (Off State System)
03619.1611	Maintaining Traffic Signal Equipment
10619.1687	Maintain Traffic Signals
06619.17	Temporary Concrete Barrier
08619.17	Temporary Concrete Barrier
11619.17	Temporary Concrete Barrier (Maintain Only)
11619.1701	Remove & Store Temporary Concrete Barrier
63619.170x	Temporary Concrete Barrier for Emergency/Standby
10619.1750	Temporary Steel Barrier
11619.1790	Temporary Concrete Barrier (Half Section)
06619.1914	Removable Non-Reflectorized Pre-formed Black Tape
10619.20	Quick Curb
14619.21xx	Portable Variable Message Display
08619.2101	Portable Variable Message Display
08619.2102	Portable Variable Message Display
06619.2109	Removable Raised Reflectorized Pavement Markers
14619.22xx	Portable Variable Message Display
11619.229301	Traffic Enforcement Agents
11619.2298	Traffic Enforcement Agents
15619.26	6 Bay TRACC Crash Cushions for Construction Zone
15619.27	9 Bay TRACC Crash Cushions for Construction Zone
15619.28	TRACC Bays Damaged and Repaired
63619.320x	Construction Signs for Emergency/Standby
11619.3405	3M Magnetic Guidance Tape
11619.3406	3M Magnetic Guidance Tape Replacement
11619.35	Impact Attenuator for Moveable TCB
91619.35	Concrete Terminal for TCB

El 07-006 Page 5 of 7

11619.351599	Quick Change Barrier (Maintain Only)
11619.35xx	Absorb 350 Impact Attenuator
11619.36	Absorb 350 Impact Attenuator
11619.3601	Remove and Store Existing Impact Attenuator
11619.3606	Remove Existing Transfer and Transport Vehicle
11619.3607	Moveable Barrier Transfer Vehicle
08619.3608	Moveable Barrier Transfer Vehicle
11619.3608	Moveable Barrier Transfer Vehicle
11619.360801	Moveable Barrier Transfer Vehicle
11619.360890	Additional Technical Support
11619.3609	Moveable Barrier Transfer Vehicle
11619.3610	Moveable Barrier Transfer Vehicle
11619.3611	Lateral Movement of Moveable Barrier
11619.361101	Lateral Movement of Moveable Barrier
11619.361102	Lateral Movement of Moveable Barrier
08619.3612	Moveable Concrete Barrier
11619.3612	Moveable Concrete Barrier
11619.3613	Moveable Concrete Barrier
11619.3614	Moveable Concrete Barrier
11619.3615	Moveable Concrete Barrier
11619.361501	Moveable Concrete Barrier
11619.3616	Remove Existing Moveable Concrete Barrier
11619.3617	Moveable Barrier Transfer Vehicle
11619.3618	Repair Moveable Barrier Transfer Vehicle
11619.3619	Training Vehicle Operators Inspection of Moveable Barrier Transfer Vehicle
10619.3620	Moveable Concrete Barrier
11619.3699	Spare Parts for Moveable Concrete Barrier
11619.37	Safeguard Link Barrier System
11619.4007	Temporary Impact Attenuator (Maintain Only)
11619.41	Remove & Store Terminal Impact Attenuator
11619.4110	Repair & Maintain Terminal Impact Attenuator
15619.4124bb	Quadguard CZ Impact Attenuator, 24 Width Class, bb Bays
15619.4130bb	Quadguard CZ Impact Attenuator, 30 Width Class, bb Bays
15619.4136bb	Quadguard CZ Impact Attenuator, 36 Width Class, bb Bays
11619.4150	Terminal Impact Attenuator (Relocate Only)
15619.4169bb	Quadguard CZ Impact Attenuator, 69 Width Class, bb Bays
15619.420x	REACT CZ Impact Attenuator, Model 350.x
15619.4524	Optional CZ Impact Attenuator
11619.50	Temporary Noise Barrier
10619.50	Temporary WZ Sight Barrier Screen
10619.51	Relocate Temporary WZ Sight Barrier Screen
08619.55xx	Dedicated Police Services
08619.55000x	Dedicated Police Services
15619.5524	Optional Construction Zone Terminal Impact Attenuator
08619.5601	Dedicated Inspection/Splice Services
15619.6024	Optional Construction Zone Terminal Impact Attenuator
01619.6030	Temporary Slotted Drainage System
10619.6060	Temporary Elevated Pedestrian Walkway
08619.6070	Temporary Fencing
11619.6070	Chain Link Fencing on TCB
03619.6071	Temporary Pedestrian Fencing
10619.6071	Chain Link Fencing on Temp Steel Safety Shape
11619.607244	Temporary Chain Link Fencing Ground Mounted
11619.607488	Temporary Chain Link Fence Gate

EI 07-006 Page 6 of 7

10619.6075	Temporary Chain Link Fence
11619.6075	Relocation of Temporary Concrete Barrier
10619.6076	Temporary Chain Link Fence
11619.6190	Landscape Maintenance
15619.6524	Optional Construction Zone Terminal Impact Attenuator
15619.6661	Temporary Modular Glare Screen
04619.6701	Maintain Continuity of Highway Lighting
10619.6701	Temporary Lighting System
11619.6701	Temporary 400 Watt Lamp & Luminaire
10619.6702	Temporary Lighting System
04619.6710	Troubleshoot & Repair Hwy Lighting System in CZ
63619.17110x	Construction Lights for Emergency/Standby
08619.6730	Lighting for Nighttime Operations
10619.6730	Lighting for Nighttime Operations
15619.6730	Lighting for Nighttime Operations
15619.68xx	Temporary Inertial Barrier Module
10619.7001	Protective Safety Shielding
11619.7001	Safety Shields
11619.7002	Safety Shields
11619.7005	Protective Shielding
11619.71	Traffic Alert Public Outreach
10619.72	Roslyn Viaduct Traffic Monitor
10619.74	Traffic Alert Public Outreach
03619.80	Maintenance and Protection of Traffic
04619.80	Temp Vehicle Queue Detector System
10619.90	Tow Truck Service
04619.9001	Good Samaritan Vehicle
10619.9001	Tow Truck Service (Heavy)
11619.9001	Tow Truck Service
01619.9002	Tow Truck Service
04619.9002	Good Samaritan Vehicle
01619.9003	Tow Truck Service
04619.9010	Tow Truck Service
08619.9010	Tow Truck Service
11619.9010	Heavy Vehicle Tow Truck Service
11619.9011	Tow Truck Service (Heavy)
07619.91	Taxicab Service for Pedestrians
10619.9301	Snow Removal
11619.996001	On-Site Tow Truck Service (Light)
11619.996002	On-Site Tow Truck Service (Heavy)
01619.999801	Vehicle Arresting Barrier
15619.999801	Vehicle Arresting Barrier
15619.999802	Vehicle Arresting Barrier

TRANSMITTED MATERIALS:

This EI issues Standard Specifications Shelf Notes for:

Work Zone Traffic Control (Sections 619 and §712-06)

Cold Milling (Section 490)

Pavement Markings (Sections 635 and 640)

Due to the length of the revisions (48 pages) the text of the changes are not attached to the hardcopy distribution of the EI. The full text of the EI can be found on the Department website at www.nysdot.gov. From NYSDOT A-Z, Select E > Engineering Directives, Instructions, Bulletins and the EIB Program > Engineering Instructions > Issued in 2007 > EI 07-006.

BACKGROUND: This is this fourth and most significant of many steps required to update Work Zone Traffic Control specifications. Other steps will include issuance of revised Standard Sheets, additional design guidance, and issuance of construction inspection guidance.

This is the first major revision to the entire Section 619 in several decades. The revision includes substantial reorganization as well as significant changes in content. The revised specification is written in parallel-modular format, where §619-1.01 corresponds to §619-2.01, 3.01, 4.01 and 5.01. This format makes it much easier for the user to locate and use the correct subsections. Other steps will include issuance of revised or new Standard Sheets, issuance of additional design guidance, and issuance of construction inspection guidance.

Sign panels are identified using the National MUTCD, which will be in effect in New York State by the time contracts using the revised specification are awarded. Identifiers starting with NY refer to signs that will be included in the NYS Supplement. Legislation adopting the National MUTCD, with a NYS Supplement, was signed into law on 9/13/06, with an effective of 9/13/07.

The contract pay items for Basic Maintenance and Protection of Traffic (619.01), Construction Signs (619.02) and Flashing Arrow Boards (619.0303), which were all Lump Sum Items, were combined into a single item. The basic item now pays 20% of the Lump Sum price bid when 10% of the contract work has been completed for the combined item, instead of 50% of the Lump Sum price bid only for Construction Signs when 10% of the contract work has been completed under the previous specification.

The contract pay item for Type III Construction Barricades (619.0413) which was measured in length (meters) of barrier was replaced with a pay item that measures each, as barricades are almost universally 1.2 m long. The separate pay item for lighting of barricades was eliminated.

Temporary Concrete Barrier (TCB) is now specified as pinned or unpinned, and with or without lighting. Revised material specifications now require that TCB be manufactured under a QC/QA program to better ensure barrier is fabricated in accordance with the specification. Concerns with TCB deflection resulted in the creation of contract pay items specifying barrier to be pinned when necessary.

The revised specifications now use the terms Temporary Pavement Markings for markings that will be in place for a maximum of 14 days, and Interim Pavement Markings for markings that will be in place for a construction season or phase, or a maximum of one year.

The effort required by a Contractor to ensure that Temporary Pavement Markings (Top Course), which are essentially final markings are accurately placed is significantly different than placement of temporary markings, therefore, the revised specifications eliminate the item. Final markings which were previously specified using Temporary Pavement Markings (Top Course) should be specified using a permanent traffic paint pavement marking item, currently available under Section 640 ReflectORIZED Pavement Marking Paints. Painted top course markings may be placed using paint even if additional, more durable markings will be added later.

Temporary Impact Attenuators are now standard contract pay items that specify NCHRP Test Level 2 or 3. The contract documents will specify a location, and the Contractor must select an appropriate attenuator that is approved for the desired Test Level, shields the width of the object(s) to be protected, and fits in the location.

A contract pay item for Traffic Control Supervisor (619.27) is now available for large or complex projects where significant additional effort is appropriate.

The contract pay items for Opening Highway to Traffic Prior to Contract Acceptance (619.1101) and Temporary Box Beam Barrier (619.18) were disapproved due to lack of use.

This EI disapproves all of the existing Section 619 special specifications. Some special specifications may still be required. Regions that need special specifications should review existing specifications and revise them to ensure that they are accurate, up-to-date and make correct references to the revised Section 619, the National MUTCD, or other pertinent Standard Specifications, and submit them for approval.

CONTACT: Direct questions regarding this EI to Tom Melander (TMelander@dot.state.ny.us) or Brian DeWald (BDeWald@dot.state.ny.us) of the Construction Division at (518) 457-6472.

WORK ZONE TRAFFIC CONTROL

Make the following changes to the Standard Specifications of May 4, 2006:
Page 551 to Page 584 Delete Section 619 in its entirety and Replace it with the following:

SECTION 619 - WORK ZONE TRAFFIC CONTROL

619-1 DESCRIPTION

619-1.01 General. Work zone traffic control shall consist of all work to provide for the safe and efficient movement of traffic through or around work zones, and to protect workers and the public from damage to person and property which may result, directly or indirectly, from any construction operations, under the direction of a trained, responsible person, as shown in the contract documents, the MUTCD and as directed by the Engineer. The duration of this work shall be from the date any work is started on the contract site, including mobilization of equipment, signs, offices, and shops until the date of contract final acceptance. Temporary materials and components that are furnished by the Contractor shall remain the property of the Contractor.

See Figure 619-1 *Component Parts Of A Highway Work Zone* for definitions of terms.

619-1.02 Basic Work Zone Traffic Control. Work shall consist of controlling traffic over a reasonably smooth traveled way which shall be marked by signs, delineators, channelizing devices, pavement markings, and other devices as shown in the contract documents or as directed by the Engineer. Work after sunset and before sunrise shall include additional requirements for nighttime operations including, but not limited to, a written plan for nighttime operations, additional worker and equipment protection, additional channelizing devices and contract site patrol.

The Contractor shall conduct its operations to ensure the safety and convenience of travelers and abutting property owners as well as the safety of all workers on the contract. Travelers include, but may not be limited to motorists, motorcyclists, bicyclists and pedestrians.

Work shall be scheduled to keep the time and distance that existing pavement is removed or substantially disturbed to a minimum and consistent with the physical requirements of the contract. Unless otherwise indicated in the contract documents, the distance over which traffic is maintained on an unpaved surface shall not exceed 800 m at any one time. During seasonal shutdown periods, no part of the highway shall be closed to traffic unless provided for in the contract documents, or the Contractor has submitted and the Engineer has approved a detailed schedule of operations reflecting a proposal to close the highway to traffic.

Basic work zone traffic control shall include the following:

A. Surface Condition, Debris, Drainage and Dust Control. Work shall consist of maintaining the surface condition of the traveled way consistent with the preconstruction posted speed limit; maintaining positive drainage, including on detours; and dust control and keeping the roadway free from debris and materials spilled from or tracked by vehicles or equipment. Debris and dust shall be controlled on all operations.

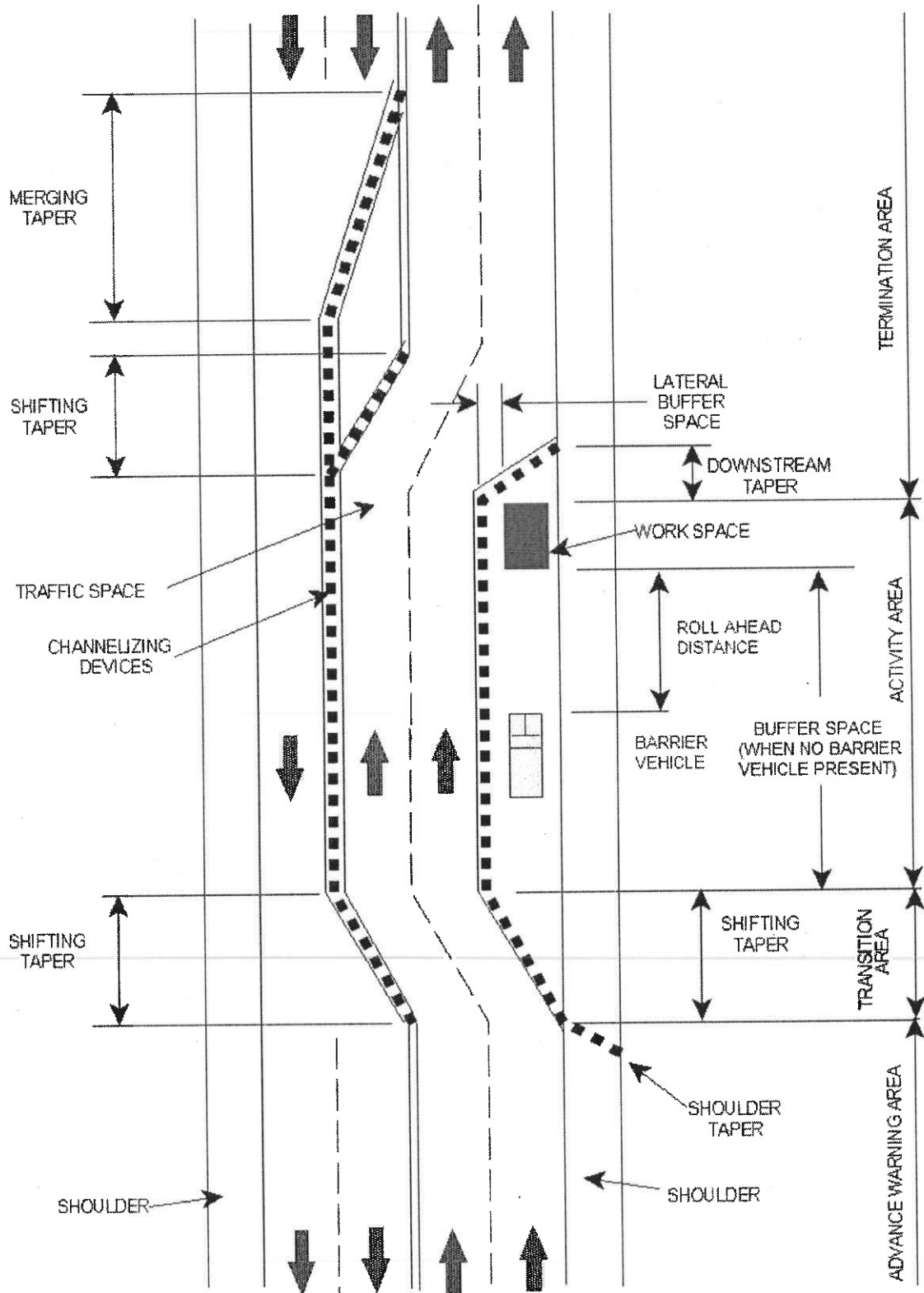
B. Seasonal Operations and Snow and Ice Control. Work shall consist of maintaining the traveled way to facilitate safe, efficient travel and permit snow and ice control by others during winter months and during any period that work is suspended.

C. Maintain Public Access. Work shall consist of maintaining public access to intersecting roads, residences, business establishments, adjacent property, bus stops and transportation facilities for vehicles, pedestrians, and bicyclists.

D. Maintain Existing Roadside Signs, Delineators and Markers. Work shall consist of maintaining, in their existing condition, existing highway signs, delineators, and markers within the contract limits.

WORK ZONE TRAFFIC CONTROL

Figure 16-1 Component Parts of a Typical Highway Work Zone



WORK ZONE TRAFFIC CONTROL

E. Maintain Existing Guide Rail, Median Barrier and Bridge Rail. Work shall consist of maintaining existing traffic barriers and other safety devices, in their existing condition, within the contract limits.

F. Construction Vehicles and Equipment. Work shall consist of equipping construction vehicles and equipment with warning lights, signs, and reflective markings and maintaining vehicles and equipment in safe operating condition.

G. Barrier/Shadow Vehicles.

1. Barrier Vehicles. Work shall consist of providing barrier vehicles to guide traffic and protect workers in stationary lane and shoulder closures and other stationary temporary traffic control zones, as shown in the contract documents or as directed by the Engineer.

2. Shadow Vehicles. Work shall consist of furnishing shadow vehicles to guide traffic and to protect workers in mobile or short duration work zones not protected by stationary lane or shoulder closures, as shown in the contract documents or as directed by the Engineer.

H. Construction Signs. Work shall consist of furnishing, installing, moving, deactivating, maintaining, and removing construction signs, including warning lights, as shown in the contract documents or as directed by the Engineer.

I. Arrow Panels. Work shall consist of furnishing, installing, maintaining, and removing arrow panels as shown in the contract documents or as directed by the Engineer. Arrow panels are used to warn and guide traffic when travel lanes are temporarily closed by construction activities.

J. Channelizing Devices. Work shall consist of furnishing and maintaining channelizing devices, with warning lights where required, including drums, vertical panels, construction barricades, cones, and temporary tubular markers. *Type III construction barricades and interim tubular markers may be specified under separate pay items.*

K. Pavement Edge Drop-Off Protection. Work shall consist of furnishing and maintaining protection for edge drop-offs adjacent to the pavement or shoulder.

L. Flagging and Traffic Control. Work shall consist of furnishing the necessary traffic control equipment and flaggers for adequate traffic control.

M. Maintain Existing Mailboxes. Work shall consist of maintaining postal route mailboxes serviced from vehicles, in a useable condition and location consistent with U.S. Postal Service requirements.

N. Contract Site Patrol. Work shall consist of furnishing personnel to patrol the contract area as necessary to ensure conditions on the site are adequate for public safety and convenience at all times.

O. Portable Traffic Signals. Work shall consist of furnishing, installing, energizing, operating, maintaining and removing portable traffic signal systems authorized by the Engineer, only as an alternative to flagging operations for one-lane, two-way alternating traffic. Portable signals shall be installed only on a highway designated as a Restricted Highway.

619-1.03 Basic Work Zone Traffic Control (Daily Operations). Work shall consist of controlling and protecting traffic as shown in the contract documents, or as directed by the Engineer, except the Contractor will not be required to repair or maintain the surface of the traveled way and other roadway features not part of the work, except to repair damage resulting from the Contractor's operations.