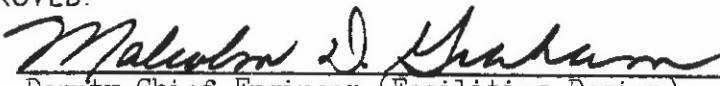


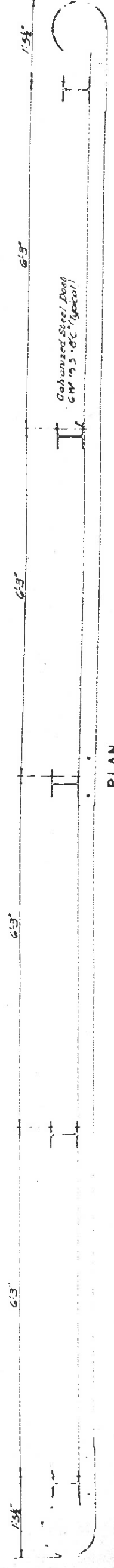
TO:  Director, Preliminary Plan Review Bureau  <b>SUPERSEDED BY EI 79-022</b> <b>EFFECTIVE 8/2/1979</b>	<h2 style="text-align: center;">ENGINEERING INSTRUCTION</h2> <p style="text-align: center;">NEW YORK STATE DEPARTMENT OF TRANSPORTATION</p> SUBJECT: <b>HIGHWAY BARRIER &amp; HIGHWAY RAILROAD BARRICADE</b> STANDARD SHEET 630-1R1 Subject Code: 7.27-2-630
Distribution: <input checked="" type="checkbox"/> Main Office <input checked="" type="checkbox"/> Regions <input type="checkbox"/> Special	Code: <u>EI 76-50</u> Date: <u>7/14/76</u>
APPROVED:  Deputy Chief Engineer (Facilities Design)	Supersedes: <b>EI 72-095 DATE 10/19/72</b>

We are transmitting under separate cover copies of our revised Standard Sheet for Highway Barriers and Highway Rail Road Barricades.

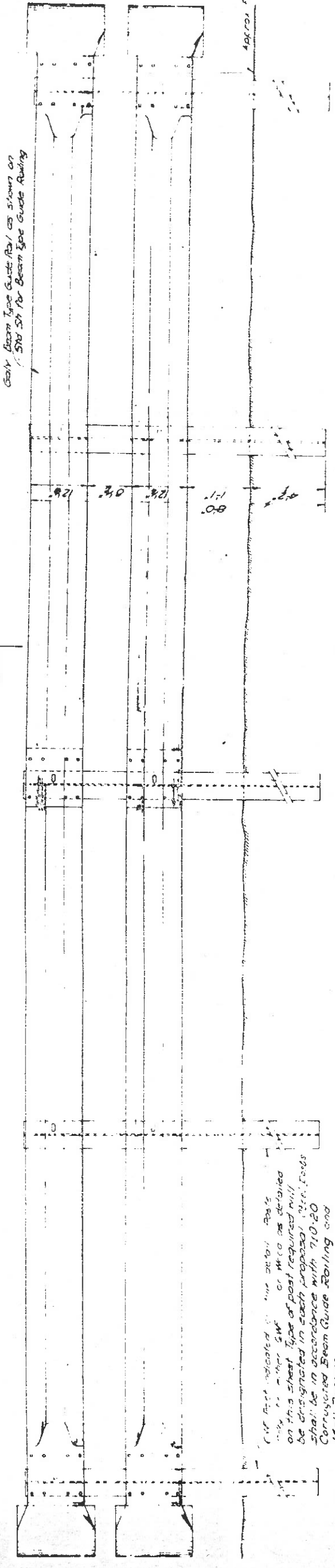
This revision adds alternate black and white reflective sheeting stripes to increase the visibility of the barrier. The Engineer when approving the method of installation of the stripes must keep in mind that this barrier is composed of two horizontal W sections supported by steel or wood posts and direct application of the stripes to the W section will produce an undesirable effect. One acceptable method of application would be to take the W 190 Clearance Marker shown in Sect 240.3 of the New York State Department of Transportation Manual of Uniform Traffic Control Devices, turn it on its side and bolt it to the upper and lower rail of the barrier. Any other method producing a flat surface for the stripes which is acceptable to the Engineer may be used.

MDG:WEH:MW  
 630 1R1

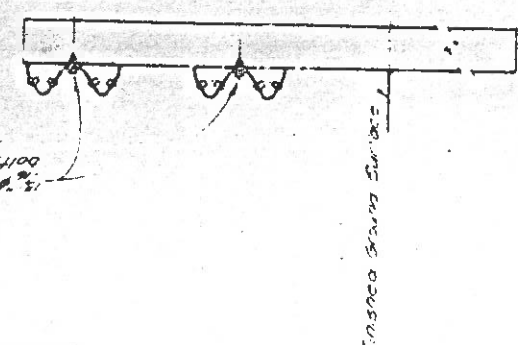
PREL.  FINAL   
 PHOTOSPAM.  LANDSCAPE   
 REVISIONS   
 FACILITIES DESIGN DIVISION  
**JUL 15 1976**  
 CIRC.   
 FILE  DESIGN



PLAN



ELEVATION



SECTION

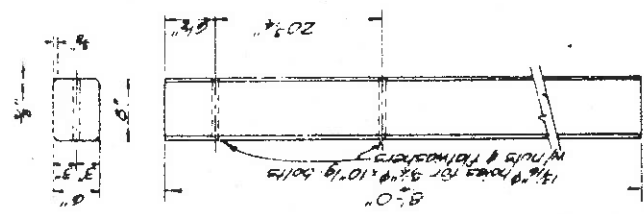
Corrugated Steel Deck  
6M x 5.0' (typical)

Beam Type Guide Rail as shown on  
S10 S1 for Beam Type Guide Railing

Post indicated on the detail Post  
shall be of the SW or W10 as detailed  
on this sheet type of post required will  
be designated in each proposed detail. Posts  
shall be in accordance with 710-20  
Corrugated Beam Guide Railing and  
Rail Barrier

Notes

1. These details apply for the highway barrier or the highway-railroad barrier.
2. When the barrier is used as a highway barrier or a highway-railroad barrier, reflecting type warning signs conforming to the latest revision of the Manual of Uniform Traffic Control Devices are required.
3. The warning sign when specified, shall be erected on separate supports and paid for under the appropriate sign item.
4. Alternate black and white reflective sheeting strips shall be provided to increase the delineation of the barrier. The strips shall be applied in the pattern shown for the Road Closed Barrier in Figure MC-3, Appendix 7 of the Manual of Uniform Traffic Control Devices. The strips shall be applied to a flat surface unless otherwise specified by the engineer.



DETAIL "A"  
WOOD POST

STATE OF NEW YORK  
DEPARTMENT OF TRANSPORTATION  
DESIGN AND CONSTRUCTION  
DIVISION  
**HIGHWAY BARRIER**  
AND  
**HIGHWAY-RAILROAD BARRICADE**

APPROVED July 14, 1976  
PROJECT NO. 20-10-10-10  
DESIGNED BY  
*Michael J. Johnson*  
CHECKED BY  
*David H. Johnson*  
CIVIL ENGINEER