

2-26-76

<p>TO:</p> <p>M. Tegza Final Plans Review Bur. Bldg. 5 4th Fl. /2 Copies/ SUPERSEDED BY EI 76-052 EFFECTIVE 7/16/1976</p>	<p align="center">ENGINEERING INSTRUCTION</p> <p align="center">NEW YORK STATE DEPARTMENT OF TRANSPORTATION</p> <p>SUBJECT: STANDARD DETAILS FOR HIGHWAY BRIDGES, REVISION TO</p> <p>Subject Code: 7.35-11</p>
<p>Distribution:</p> <p><input type="checkbox"/> Main Office <input type="checkbox"/> Regions <input checked="" type="checkbox"/> Special</p>	<p>Code: <u>EI-76-9</u></p>
<p>APPROVED:</p> <p align="center"><i>J. V. Hourigan</i></p> <p align="center">DEPUTY CHIEF ENGINEER (STRUCTURES)</p>	<p>Date: <u>1/14/76</u></p> <p>Supersedes:</p>

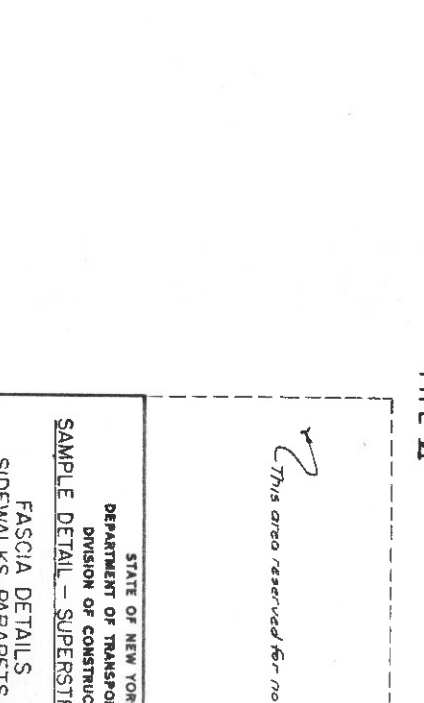
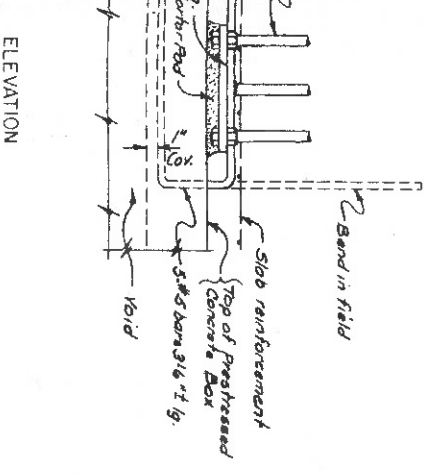
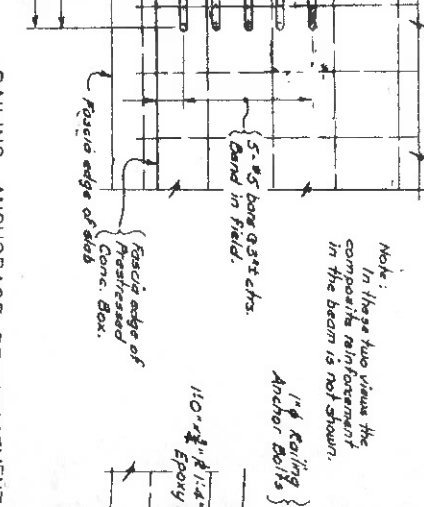
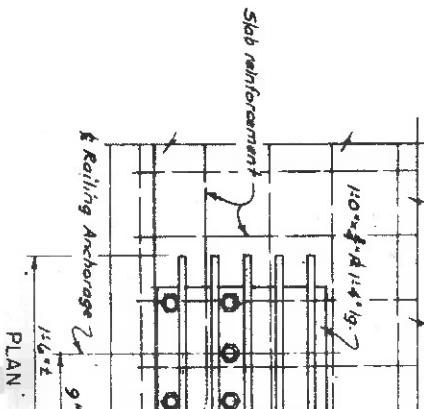
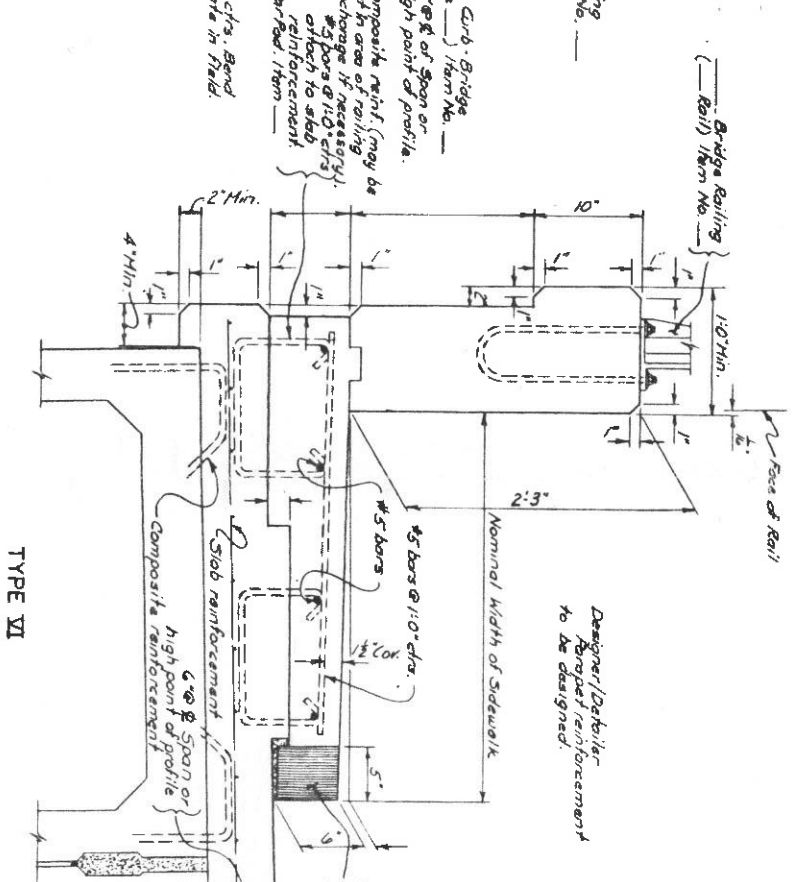
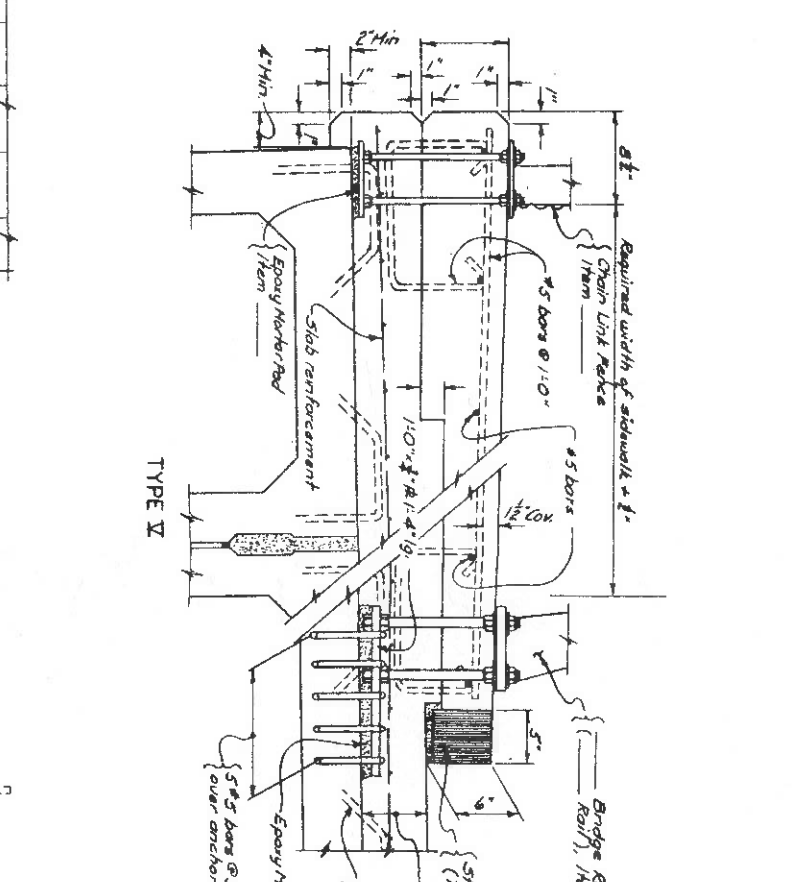
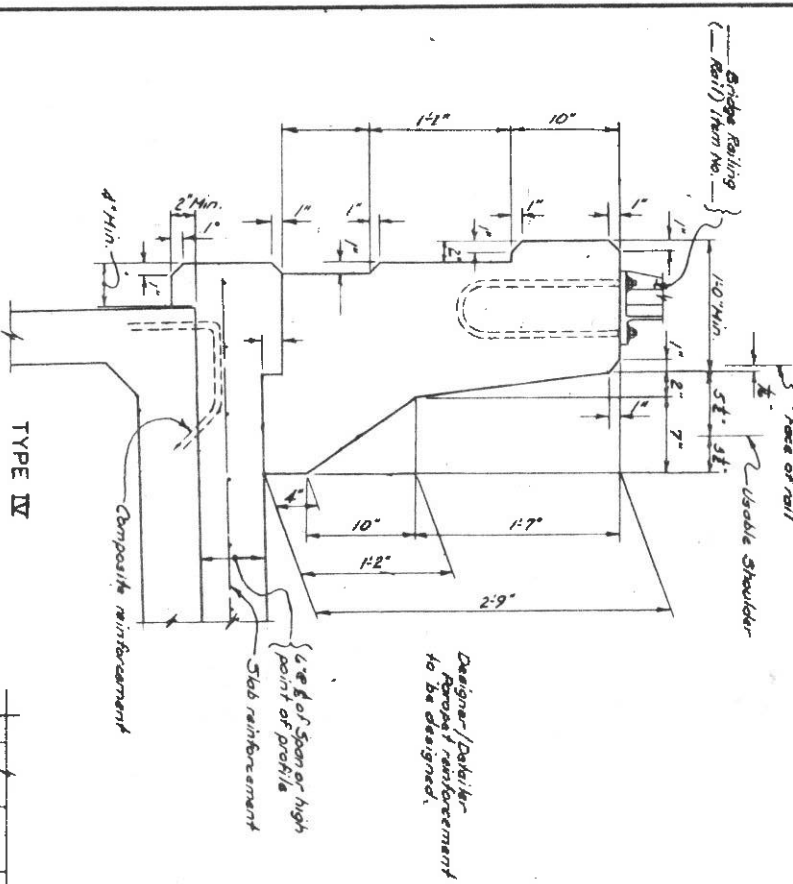
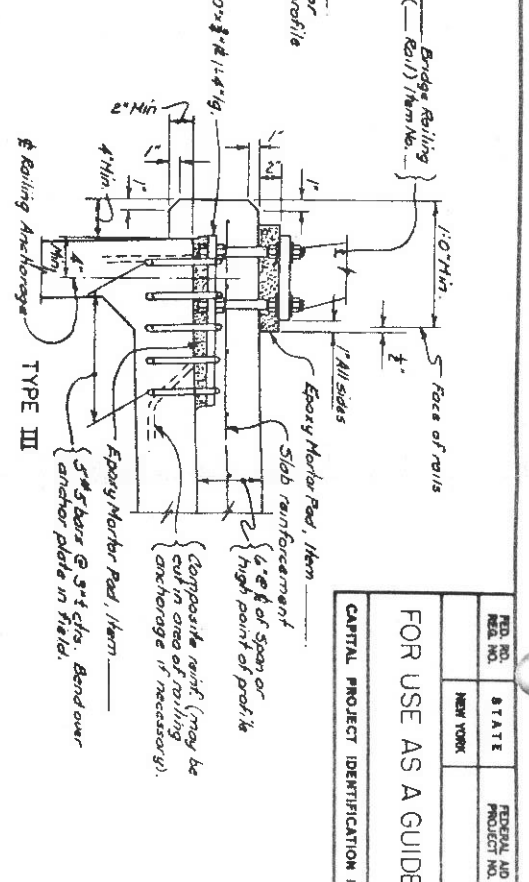
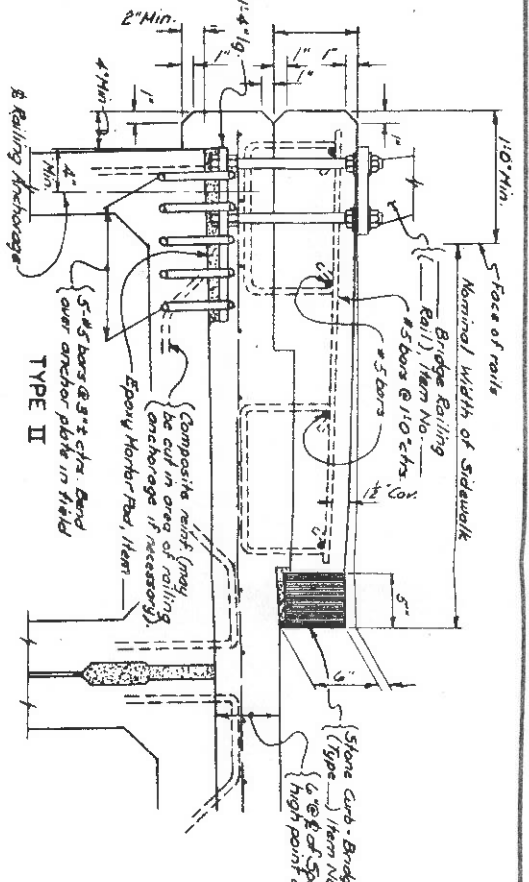
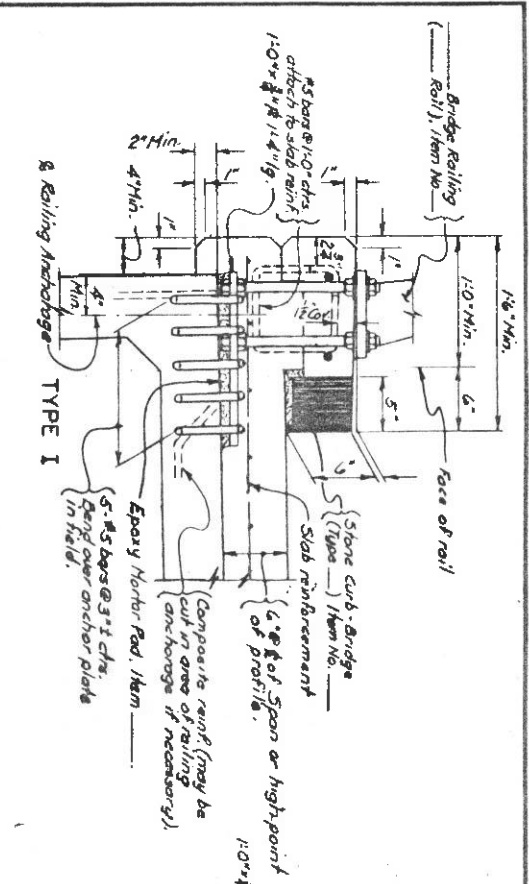
- GLD - PC1 - Added - Fascia Details - Sidewalks, Parapets and Curbs - Prestressed Box Units
- GLD - PC2 - Added - Transverse Section and Superstructure Plan
- GLD - PC3 - Added - Prestressed Concrete Box Beam Details
- GLD - PC4 - Added - Prestressed Concrete Box Beam Details (Continued)
- GLD - PC5 - Added - Miscellaneous Details for Prestressed Concrete Boxes
- GLD - PC6 - Added - Beam End and Anchor Rod Details

PREL. FINAL
PHOTOGRAPH. LANDSCAPE
RECEIVED
FACILITIES DESIGN SUBDIVISION
FEB 26 1976
CIRC. FILE DESIGN

FED. NO.	STATE	FEDERAL AID PROJECT NO.	SHEET NO.	TOTAL SHEETS
NEW YORK	NEW YORK			

FOR USE AS A GUIDE ONLY

CAPITAL PROJECT IDENTIFICATION NO.



DATE MADE _____
 PROJECT ENGINEER _____
 IN CHARGE OF _____
 DESIGNED BY _____
 DESIGN CHECKED BY _____
 DETAIL CHECKED BY _____

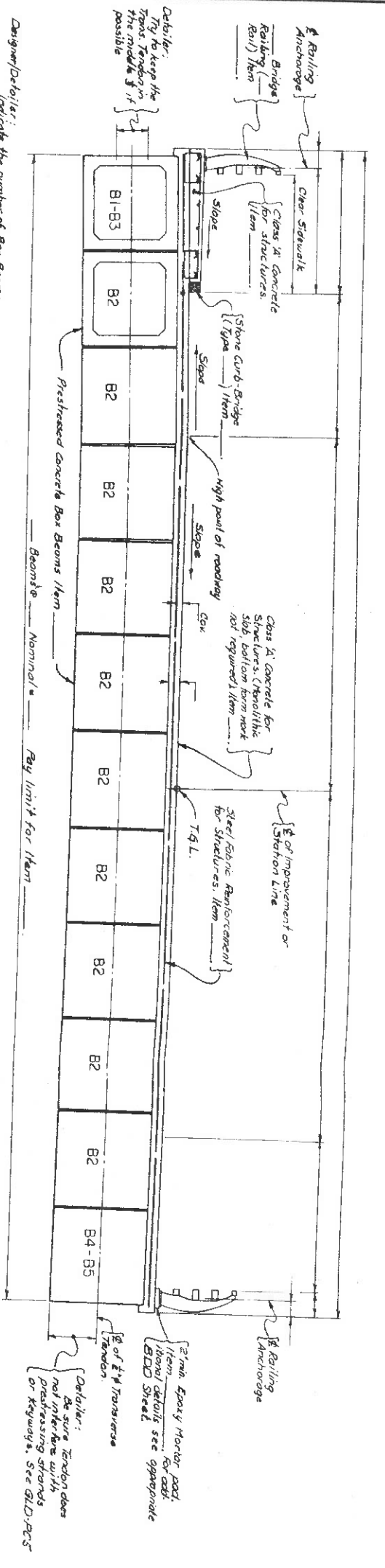
STATE OF NEW YORK
 DEPARTMENT OF TRANSPORTATION
 DIVISION OF CONSTRUCTION
 SAMPLE DETAIL - SUPERSTRUCTURE
 FASCIA DETAILS
 SIDEWALKS, PARAPETS & CURBS
 PRESTRESSED BOX UNITS
 DRAWING NO. GL-D-PCI

ADDED JAN 1976

REQ. NO.	STATE	FEDERAL AID PROJECT NO.	SHEET NO.	TOTAL SHEETS
NEW YORK				

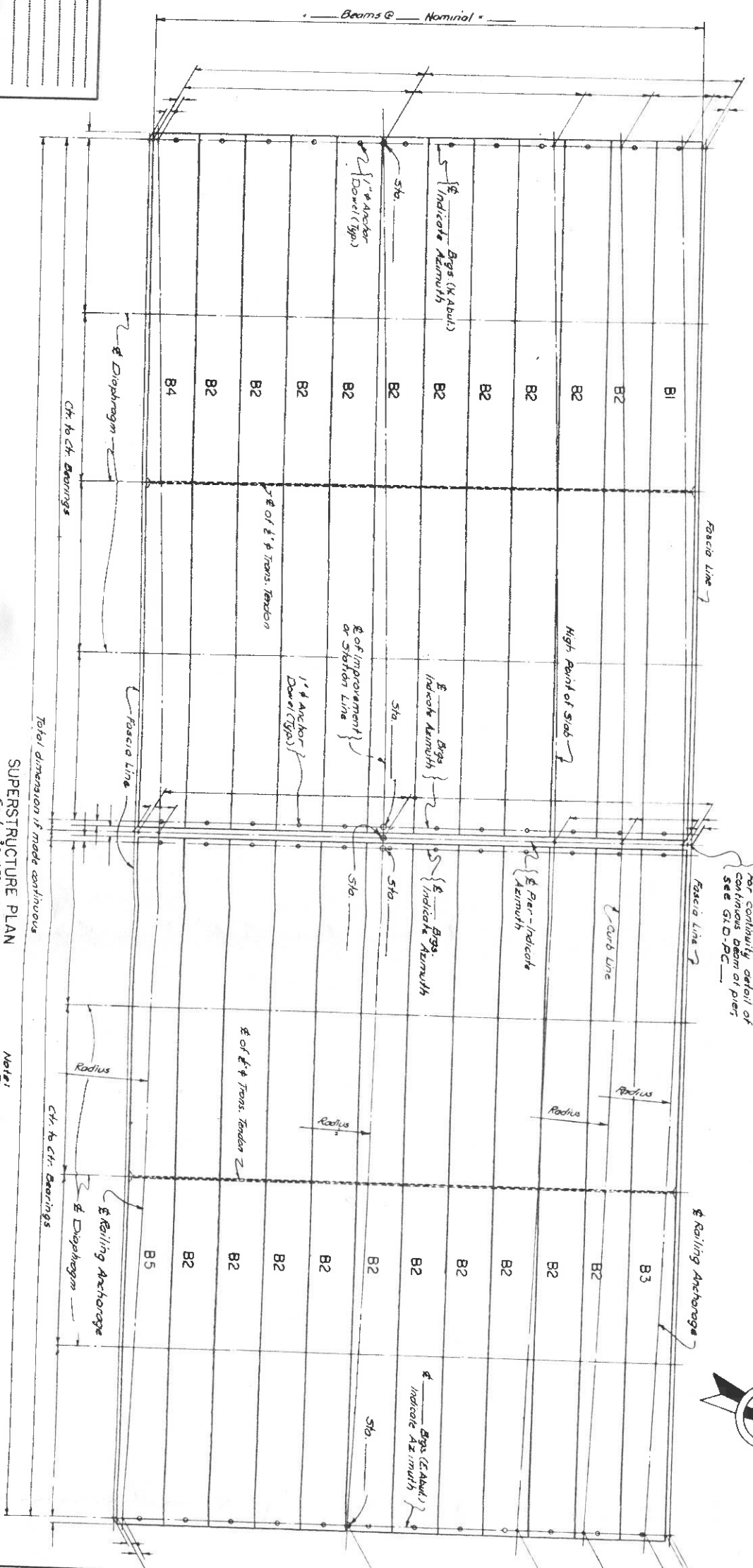
FOR USE AS A GUIDE ONLY

CAPITAL PROJECT IDENTIFICATION NO.



Designer/Detailer: Indicate the number of Bar Beams, their sizes and number of joints between them. Allow 3" per foot. Missing of 3:0" or 4:0" Bar Beams will be allowed, the location of which must be indicated.

TRANSVERSE SECTION
Scale 1/2"=1'-0"



SUPERSTRUCTURE PLAN
Scale 1/2"=1'-0"

DATE MADE _____
PROJECT ENGINEER _____
IN CHARGE OF _____
DESIGNED BY _____
DESIGN CHECKED BY _____
DETAILED BY _____
DETAIL CHECKED BY _____

Designer/Detailer: Lateral Diaphragms: Midspan for spans up to 50' spans over 50' Midspan & quarter points for spans over 50'.
Transverse Tendons: No tendons in spans up to 40' 4 up to 75' Midspan for spans over 50' 4 up to 75' Outer quarter points for spans over 75'.
Fabric Reinforcement shall be 12 gauge wire of 6 inches center to center in both the transverse and longitudinal direction. At splice the reinforcement shall lap 1'-0".

Notes:
For sidewalk details and railing exchange details, see G.L.D.-P.C.1
For continuity detail of pier for continuous structures, see G.L.D.-P.C.6
Downward deflection under dead load (Slab) Downward deflection under dead load (Superimposed)

Notes:
Apertments and Bar not shown.

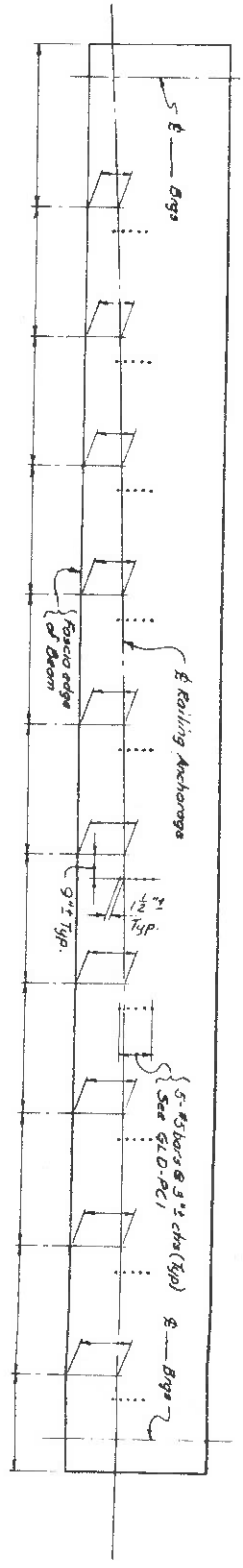
STATE OF NEW YORK
DEPARTMENT OF TRANSPORTATION
DIVISION OF CONSTRUCTION
SAMPLE DETAIL - SUPERSTRUCTURE
TRANSVERSE SECTION 8
SUPERSTRUCTURE PLAN
CONTINUOUS SPANS
DRAWING NO. G.L.D.-P.C.2
ADDED JAN 1976

All reinforcement to be verified by designer

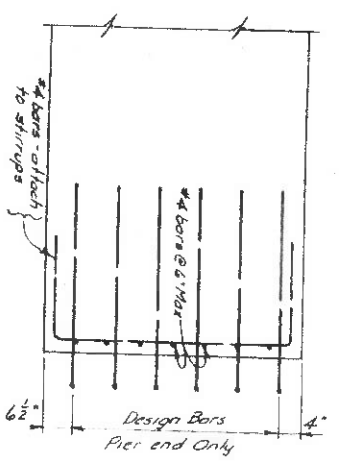
FED. NO.	STATE	FEDERAL AID PROJECT NO.	SHEET NO.	TOTAL SHEETS
	NEW YORK			

FOR USE AS A GUIDE ONLY

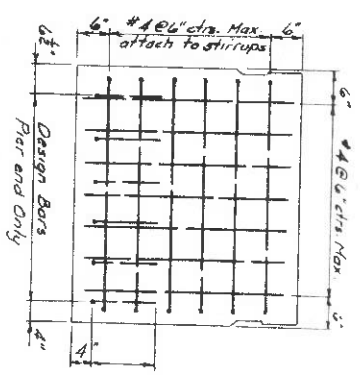
CAPITAL PROJECT IDENTIFICATION NO.



PLAN OF RAILING ANCHORAGE REINF.
(B4 SHOWN)
Not to Scale



PLAN
Detailer: The design bars in end block should also be shown on beam elevation.



END ELEVATION
END BLOCK REINFORCEMENT FOR CONTINUOUS BEAMS
Scale 1/2"=1'-0"

Notes:
For additional information on continuous beams see G.L.D. PC6.

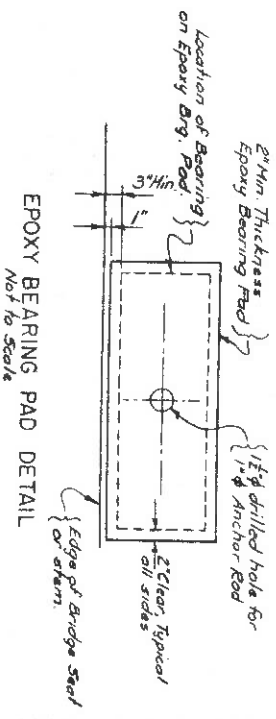
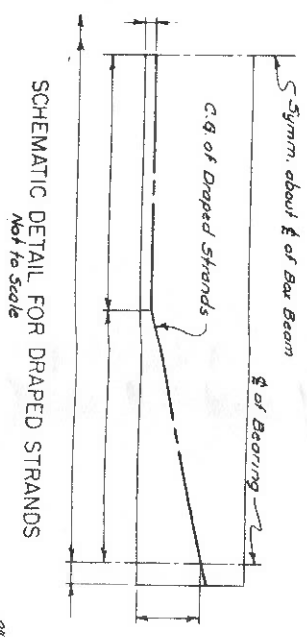
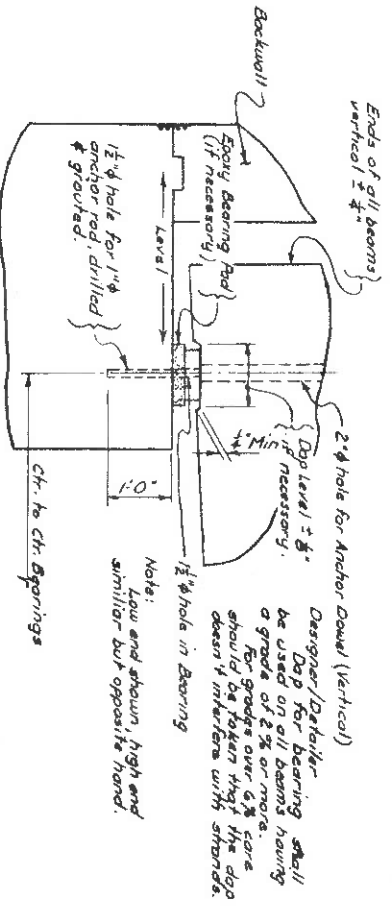
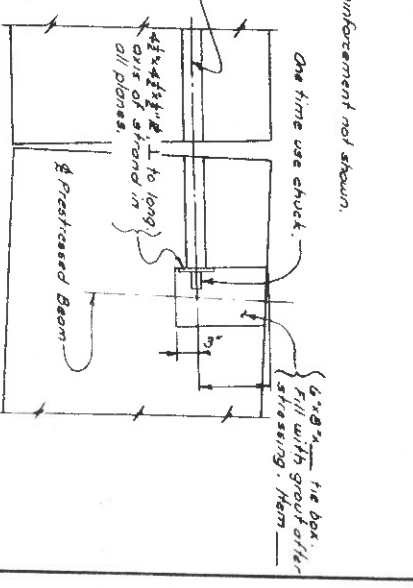
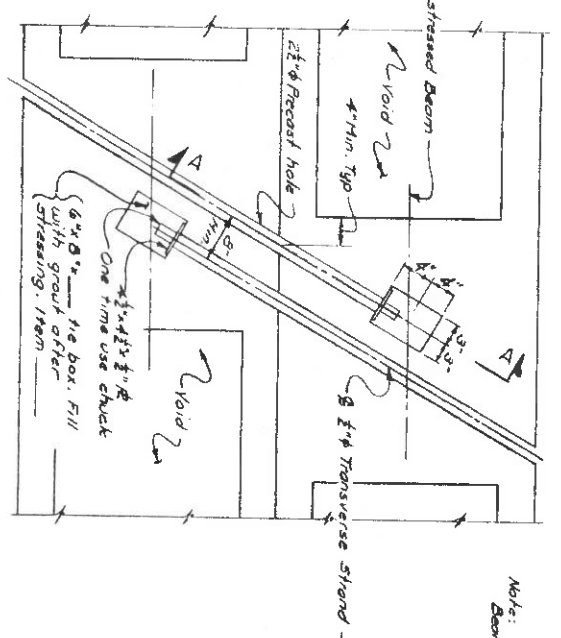
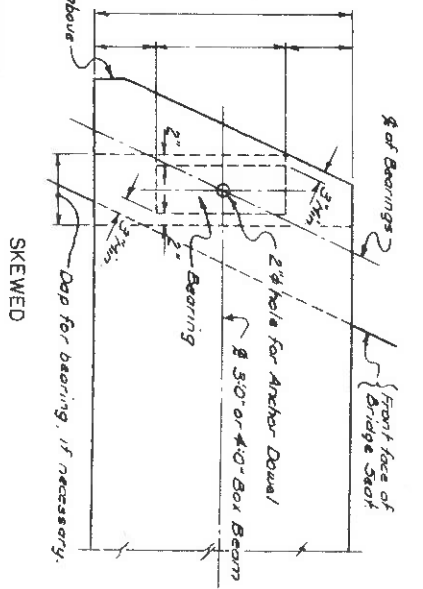
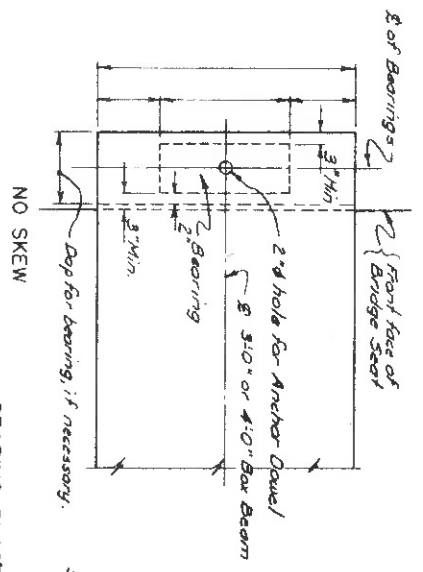
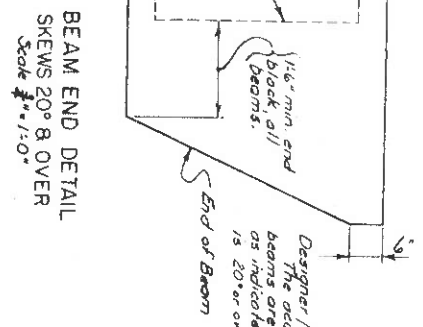
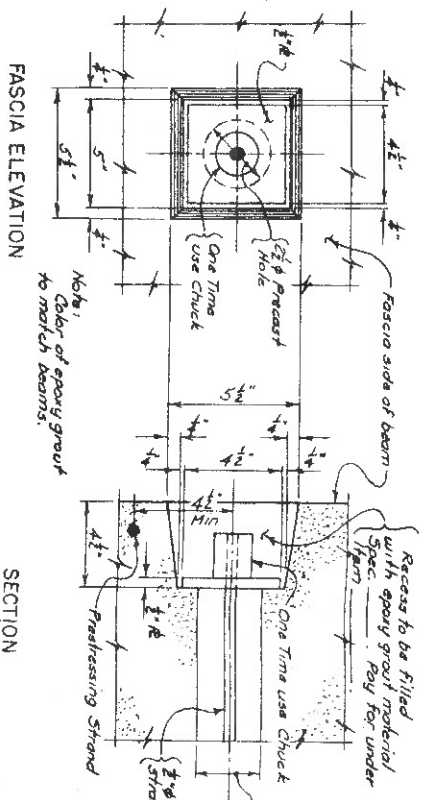
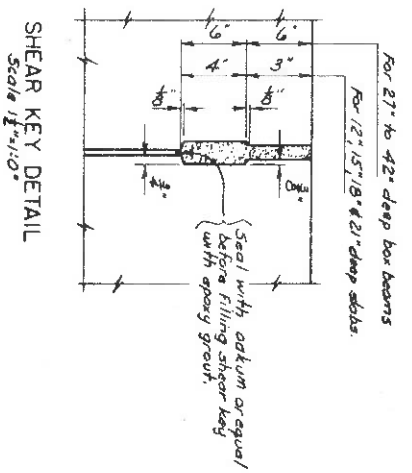
DATE MADE	
PROJECT ENGINEER	
IN CHARGE OF	
DESIGNED BY	
DESIGN CHECKED BY	
DETAILED BY	
DETAIL CHECKED BY	

STATE OF NEW YORK
DEPARTMENT OF TRANSPORTATION
DIVISION OF CONSTRUCTION
SAMPLE DETAIL - SUPERSTRUCTURE
PRESTRESSED CONCRETE
BOX BEAM DETAILS CONT.
SIMPLE SPANS
CONTINUOUS SPANS
DRAWING NO. G.L.D.-PC4

ADDED JAN 1976

FED. PROJ. NO.	STATE	FEDERAL AID PROJECT NO.	SHEET NO.	TOTAL SHEETS
	NEW YORK			

FOR USE AS A GUIDE ONLY
CAPITAL PROJECT IDENTIFICATION NO.



This area reserved for notes

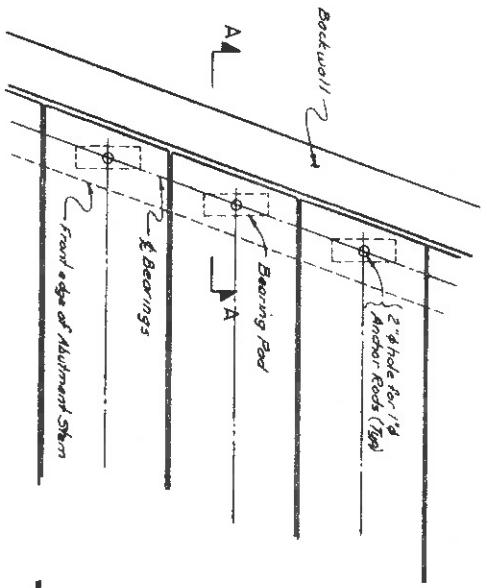
STATE OF NEW YORK
DEPARTMENT OF TRANSPORTATION
DIVISION OF CONSTRUCTION
SAMPLE DETAIL - SUPERSTRUCTURE
MISCELLANEOUS DETAILS FOR
PRESTRESSED CONCRETE BOXES

DATE MADE _____
PROJECT ENGINEER _____
IN CHARGE OF _____
DESIGNED BY _____
DESIGN CHECKED BY _____
DETAILED BY _____
DETAIL CHECKED BY _____

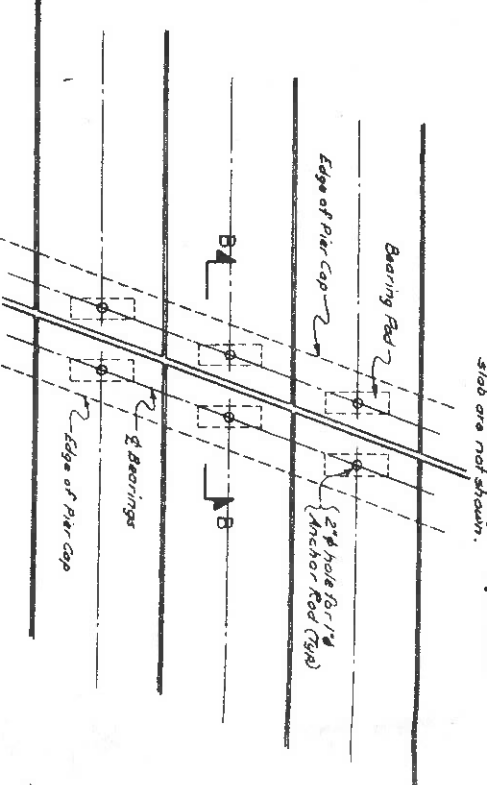
FED. RD. DIST. NO.	STATE	FEDERAL AID PROJECT NO.	SHEET NO.	TOTAL SHEETS
	NEW YORK			

FOR USE AS A GUIDE ONLY

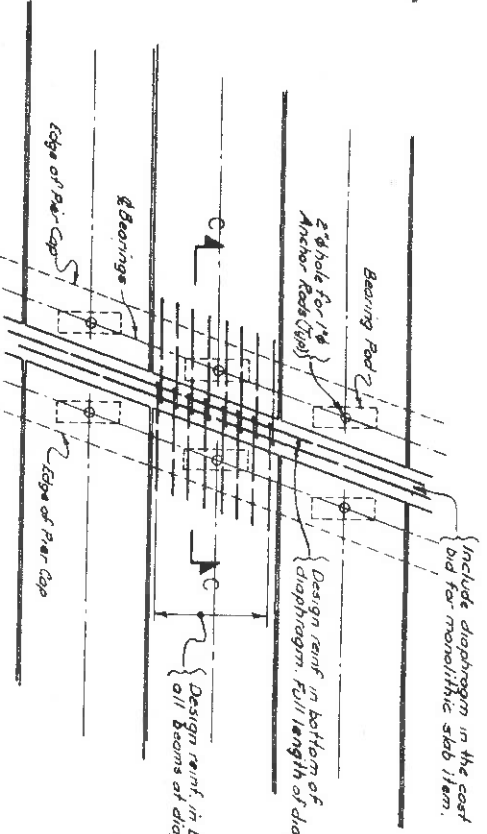
CAPITAL PROJECT IDENTIFICATION NO.



PARTIAL PLAN AT ABUTMENT SIMPLE & CONTINUOUS SPANS Scale 1/4"=1'-0"



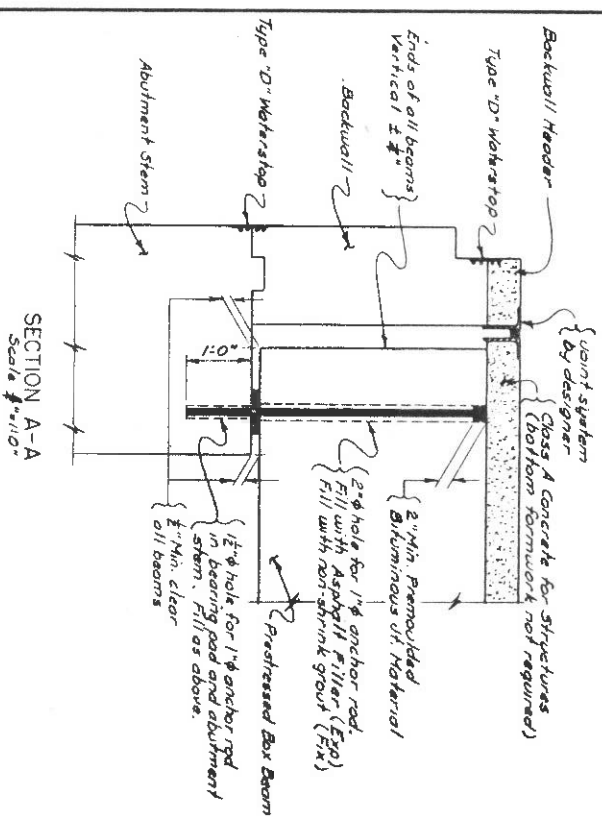
PARTIAL PLAN AT PIER SIMPLE SPANS Scale 1/4"=1'-0"



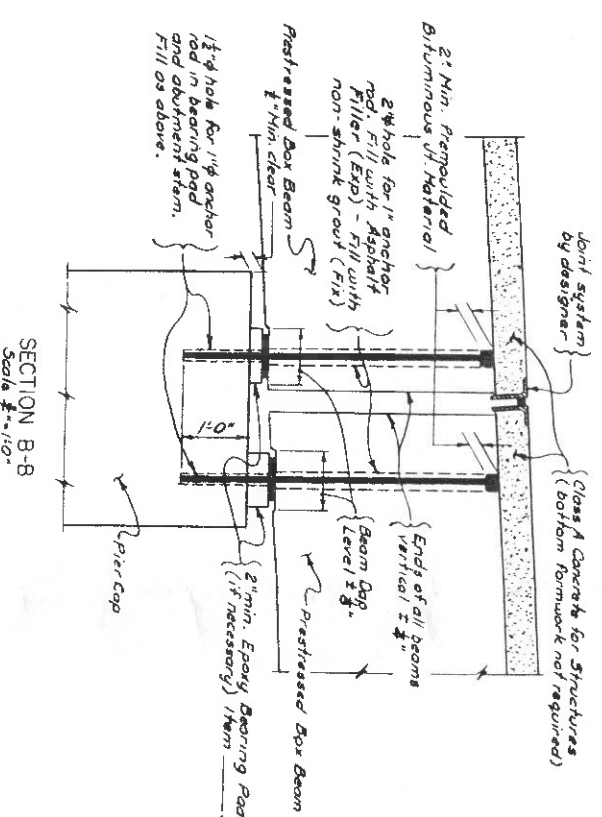
PARTIAL PLAN AT PIER CONTINUOUS SPANS Scale 1/4"=1'-0"

Note: In the three partial plans below the backwall header, joint system and slab are not shown.

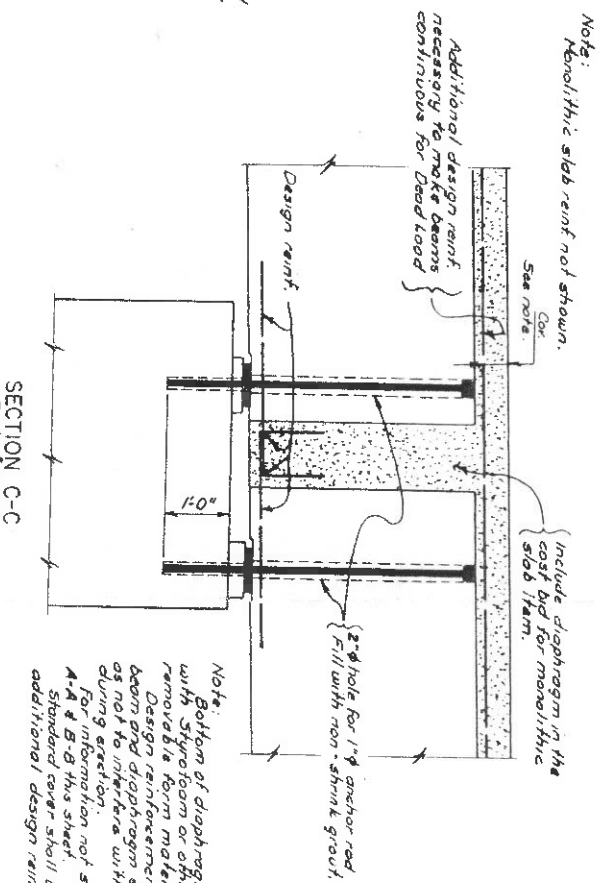
Include diaphragm in the cost bid for monolithic slab item.



SECTION A-A Scale 1/4"=1'-0"



SECTION B-B Scale 1/4"=1'-0"



SECTION C-C Scale 1/4"=1'-0"

Note: Monolithic slab reinf. not shown. See note.

Note: Bottom of diaphragm to be formed with styrofoam or other approved non-removable form material. Design reinforcement in bottom of beam and diaphragm shall be so placed as not to interfere with each other during erection. For information not shown see Sections A-A & B-B this sheet. Standard cover shall be maintained on additional design reinforcement in slab.

Notes: The ends of beams and anchor rod holes shall be made vertical ± 1/4". Beams having a grade of 2% or greater shall be coped level ± 1/4" in bearing area. Anchor rod holes shall be 2" holes for expansion up to 300'.

DATE MADE	
PROJECT ENGINEER	
IN CHARGE OF	
DESIGNED BY	
DESIGN CHECKED BY	
DETAILED BY	
DETAIL CHECKED BY	

STATE OF NEW YORK
DEPARTMENT OF TRANSPORTATION
DIVISION OF CONSTRUCTION
SAMPLE DETAIL - SUPERSTRUCTURE
BEAM END & ANCHOR ROD
DETAILS
DRAWING NO. G.L.D.-PC6

ADDED JAN 1976