
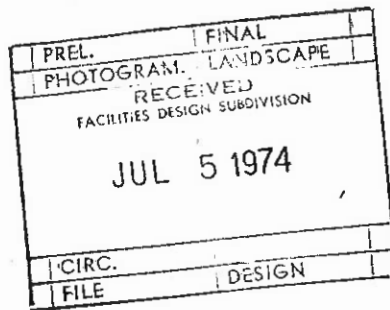


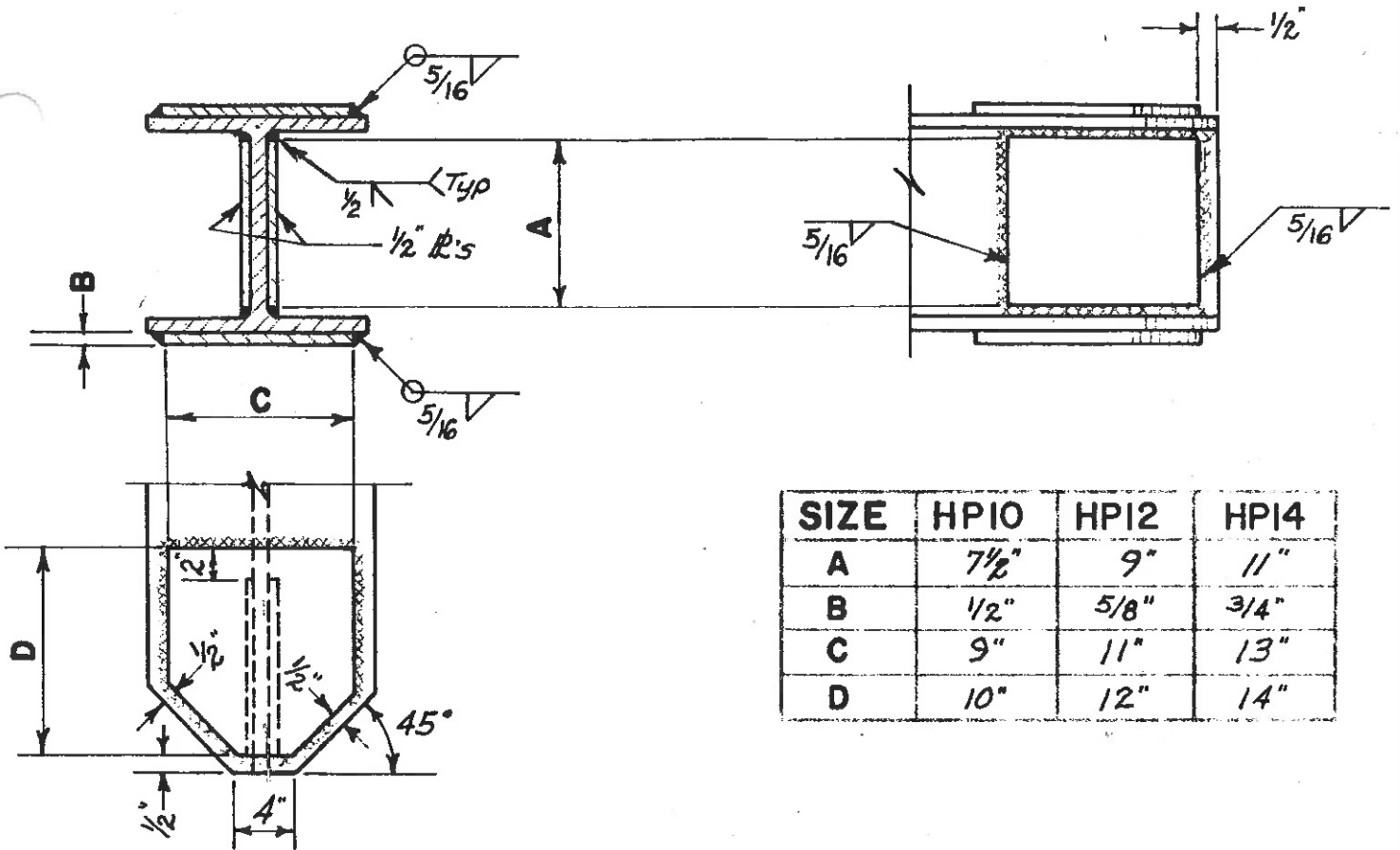
<p>TO:</p> <p>MAIN OFFICE</p> <p>REGIONAL OFFICES</p> <p>SUPERSEDED BY EI 77-031</p> <p>EFFECTIVE 5/1/1977</p>	 <p>ENGINEERING INSTRUCTION</p> <p>NEW YORK STATE DEPARTMENT OF TRANSPORTATION</p>
<p>Distribution:</p> <p><input checked="" type="checkbox"/> Main Office <input checked="" type="checkbox"/> Regions <input type="checkbox"/> Special</p>	<p>Code: <u>EI 74-61</u></p>
<p>APPROVED:</p> <p><i>R. N. Kamp</i></p> <p>Deputy Chief Engineer (Structures)</p>	<p>Date: <u>7/1/74</u></p> <p>Supersedes: BR 410</p> <p>Dated July 1973</p>

Effective immediately, revised sheet BR 410, dated June 1974 will supersede sheet BR 410, dated July 1973.

The size and "A" dimension were revised in the table.

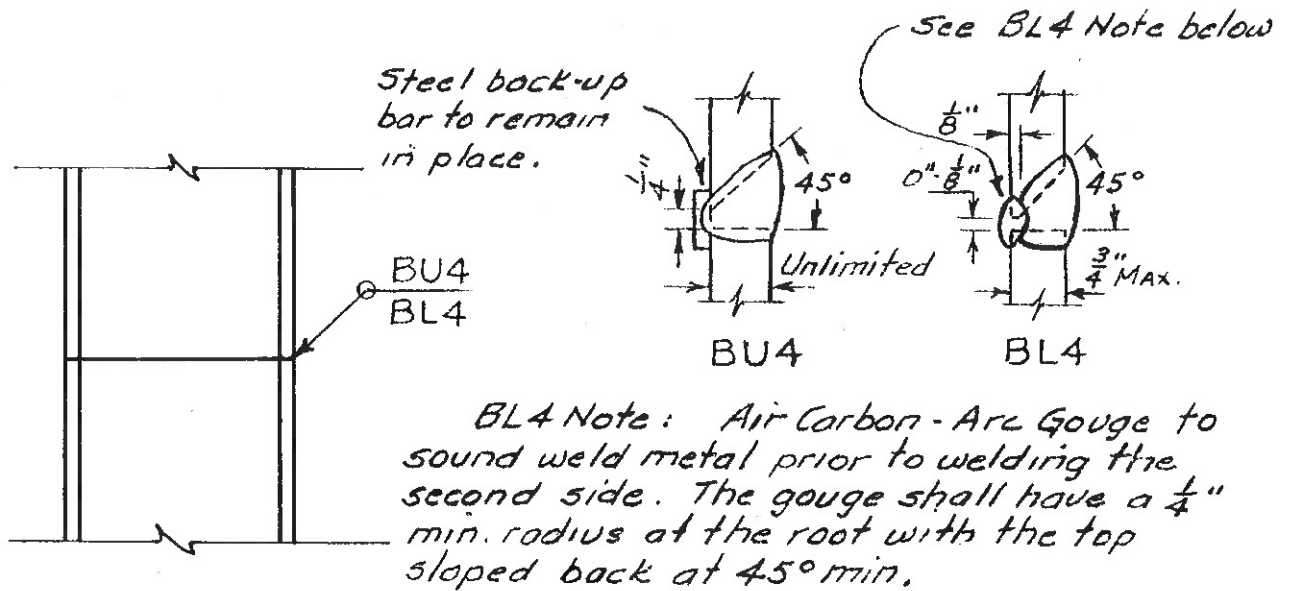
These changes were made to conform to the new designation and "T" dimensions shown in the 7th Edition of the AISC Steel Construction Manual.





REINFORCED BEARING PILE TIP

Scale: 1" = 1'-0"



STEEL SPLICE FOR BEARING PILE

Scale: 1" = 1'-0"

June 1974

BR 410