

TO:



## ENGINEERING BULLETIN

NEW YORK STATE DEPARTMENT OF TRANSPORTATION

SUBJECT: ADDITIONAL MATERIALS DETAILS FOR  
BREAKAWAY TRANSFORMER BASES  
(ALUMINUM) ITEM 723-15.01

Subject Code: 7.42-670

Distribution:

Code: EB 92-12

APPROVED:

  
\_\_\_\_\_  
W. J. Brule, Director, Materials Bureau

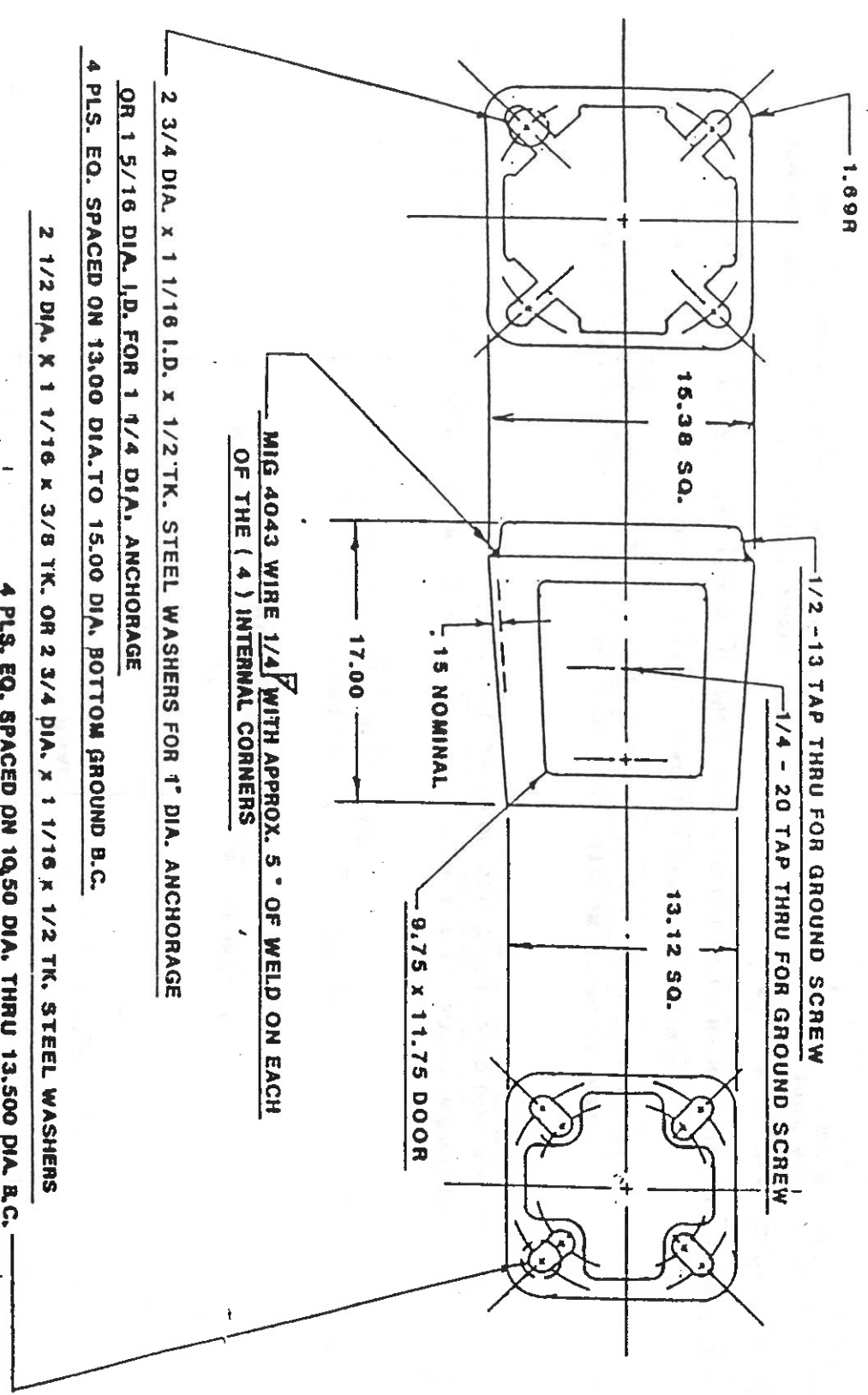
Date: 06/15/92

Supersedes:

Attached to this Engineering Bulletin are copies of the Materials Details for additional breakaway aluminum transformer bases which have been approved for use on New York State Department of Transportation Contracts. These bases meet the latest FHWA crash criteria.

As outlined in EI 83-3 and Materials Method NY 25, the Engineer shall compare the reference information from the Materials Details received at the job site to that shown on the Approved List. The reference numbers of the attached Materials Details are the same as those which will appear on the Department's Approved List.

If there is a discrepancy in the information which the Engineer receives, the Engineer should contact either the Regional Construction Supervisor or the Regional Materials Engineer to resolve this matter.



MIG 4043 WIRE 1/4 WITH APPROX. 5° OF WELD ON EACH OF THE (4) INTERNAL CORNERS

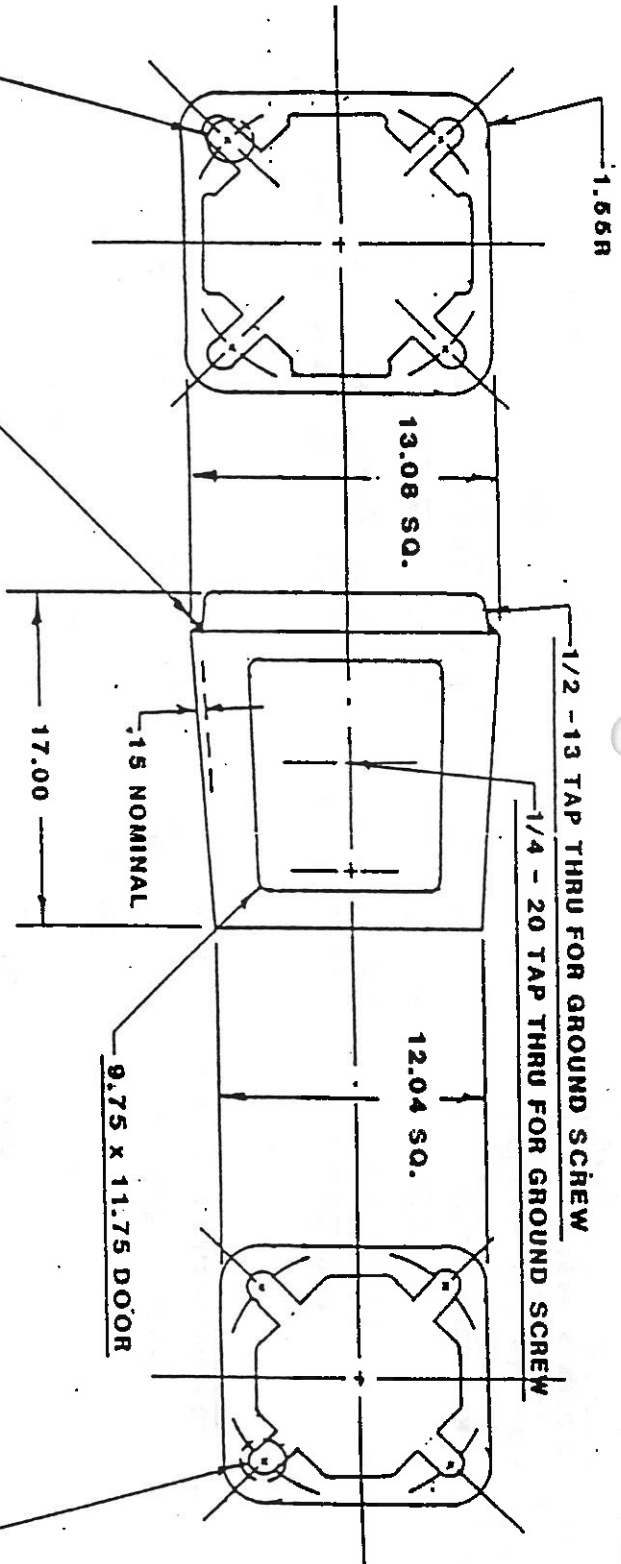
2 3/4 DIA. x 1 1/16 I.D. x 1/2 TK. STEEL WASHERS FOR 1" DIA. ANCHORAGE  
 OR 1 5/16 DIA. I.D. FOR 1 1/4 DIA. ANCHORAGE  
 4 PLS. EQ. SPACED ON 13.00 DIA. TO 15.00 DIA. BOTTOM GROUND B.C.

2 1/2 DIA. x 1 1/16 x 3/8 TK. OR 2 3/4 DIA. x 1 1/16 x 1/2 TK. STEEL WASHERS  
 4 PLS. EQ. SPACED ON 10.50 DIA. THRU 13.500 DIA. B.C.

DOOR SUPPLIED/BLANK OR LOGO IN ALUMINUM OR PLASTIC WITH OR WITHOUT HINGE  
 STD 1/4 - 20 S.S. HEX. SCREW OR VANDAL SCREW TO FIT YOUR SPECIFICATIONS  
 ALL WASHERS TO BE ZINC MECHANICAL COATED PER ASTM B 695 - 85 CLASS 50  
 356 T-6 ALUMINUM ALLOY / 8.S. WHEELABRATED FINISH CHEMICAL AND PHY. CERTS TO BE SUPPLIED WITH EACH SHIPMENT

ADHESIVE BREAKAWAY AND CAUTION LABELS TO APPEAR ON INSIDE WALL OPPOSITE DOOR OPENING

Flare poles, inc. - E. setaulet, NY.		
DATE:	DWG#	
5/18/92	3576	TP 1-17"
1985 AASHTO T-BASE		



MIG 4043 WIRE 1/4" WITH APPROX. 5° OF WELD ON EACH OF THE ( 4 ) INTERNAL CORNERS

2 3/4 DIA. x 1 1/16 I.D. x 1/2 TK. STEEL WASHERS FOR 1" DIA. ANCHORAGE  
 4 PLS. EQ. SPACED ON 10.00 DIA. THRU 12.00 DIA. GROUND B.C.

2 1/2 DIA. x 1 1/16 I.D. x 3/8 TK. OR 2 3/4 DIA. x 1 1/16 I.D. x 1/2 TK. STEEL WASHERS  
 4 PLS. EQ. SPACED ON 10.00 DIA. THRU 12.00 DIA. B.C.

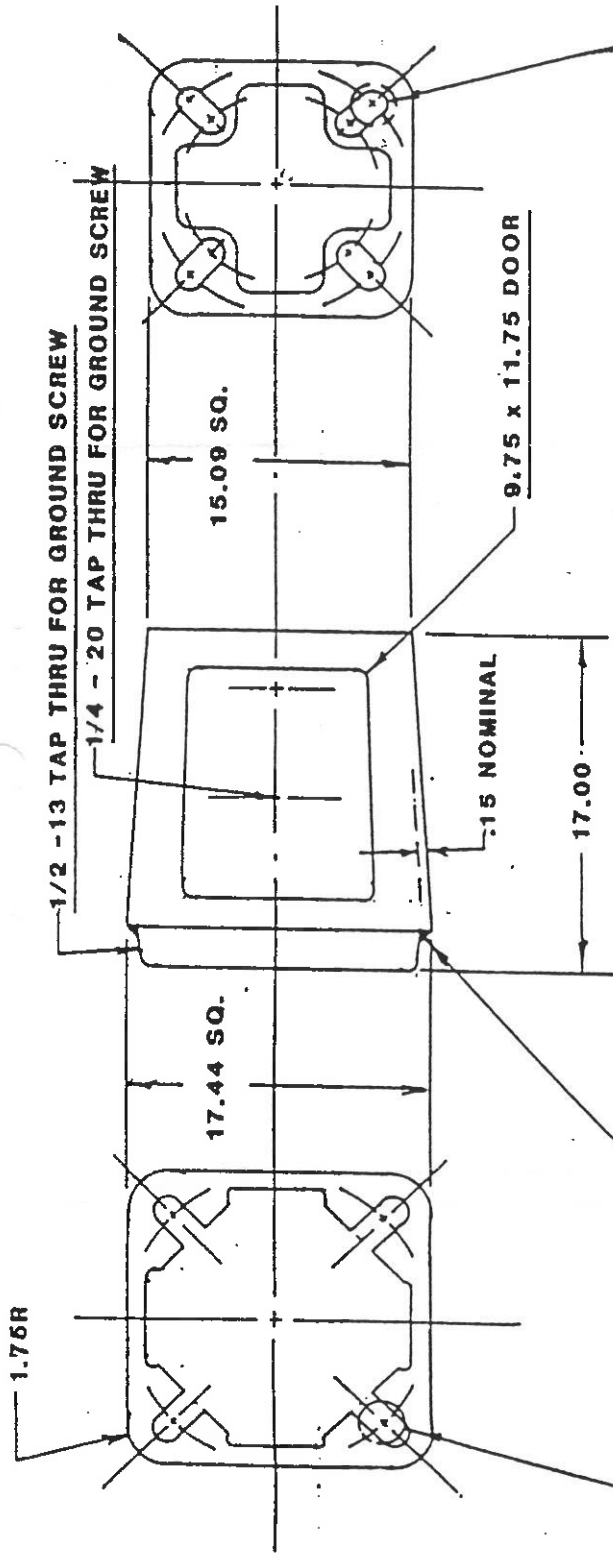
DOOR SUPPLIED/BLANK OR LOGO IN ALUMINUM OR PLASTIC WITH OR WITHOUT HINGE  
 STD 1/4 - 20 S.S.HEX. SCREW OR VANDAL SCREW TO FIT YOUR SPECIFICATIONS

ALL WASHERS TO BE ZINC MECHANICAL COATED PER ASTM B 696 - 86 CLASS 50

356 T-6 ALUMINUM ALLOY / S.S. WHEELABRATED FINISH CHEMICAL AND PHY. CERTS TO BE SUPPLIED WITH EACH SHIPMENT

ADHESIVE BREAKAWAY AND CAUTION LABELS TO APPEAR  
 ON INSIDE WALL OPPOSITE DOOR OPENING

FlaPoles, Inc., E. Setauket, NY.		
DATE:	1985	ASHTO T-BASE
5/18/92	3577	TB2-17"



WITH APPROX. 5" OF WELD ON EACH OF THE ( 4 ) INTERNAL CORNERS

2 3/4 DIA. x 1 5/16 x 1/2 TK. STEEL WASHERS FOR 1 1/4 DIA. ANCHORAGE  
 4 PLS, EQ, SPACED ON 15.00 DIA. THRU 17.25 DIA: BOTTOM GROUND B.C.  
 WHEN ADDITIONAL STATIC LOADING IS REQUIRED ON 15.00 DIA. B.C. APPLICATIONS USE 5/8 x 2 3/4 x 4 1/4  
 RECTANGULAR STEEL WASHER UNDER 2 3/4 x 1 1/16 I.D. x 1/2 TK. WASHERS FOR 1" DIA. GROUND MOUNTING B.C.

2 3/4 DIA. x 1 5/16 I.D. x 1/2 TK. STEEL WASHERS 4 PLS. EQ. SPACED ON 13.00 DIA. THRU 15.12 DIA. B.C.

DOOR SUPPLIED/BLANK OR LOGO IN ALUMINUM OR PLASTIC WITH OR WITHOUT HINGE

.6T'D 1/4 -20 S.S.HEX. SCREW OR VANDAL SCREW TO FIT YOUR SPECIFICATIONS

ALL WASHERS TO BE ZINC MECHANICAL COATED PER ASTM B 695 - 85 CLASS 50

356 T-6 ALUMINUM ALLOY / .8.S. WHEELABRATED FINISH CHEMICAL AND PHY. CERTS TO BE SUPPLIED WITH EACH SHIPMENT

ADHESIVE BREAKAWAY AND CAUTION LABELS TO APPEAR  
 ON INSIDE WALL OPPOSITE DOOR OPENING

Flapoles, Inc. E. Setonct, N.Y.

1985 AASHTO T-BASE

DATE: 5/18/92 DWG # 3578

T B3 - 17 "

MATERIAL MELTED AND MANUFACTURED IN THE USA. CASTINGS PRODUCED IN THE USA.