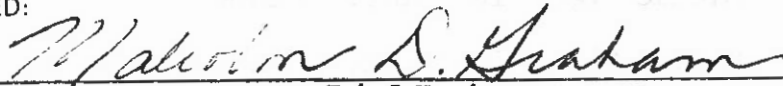


TO: MODIFIED BY EI 74-007 EFFECTIVE 1/14/1974 SUPERSEDED BY EB 99-014 EFFECTIVE 2/23/1999	<h1 style="margin: 0;">ENGINEERING INSTRUCTION</h1> <p style="margin: 0;">NEW YORK STATE DEPARTMENT OF TRANSPORTATION</p>
	SUBJECT: STANDARD SHEET 645-8R1, STANDARD REGULATORY AND WARNING SIGNS Subject Code: 7.27-2-645
Distribution: <input checked="" type="checkbox"/> Main Office <input checked="" type="checkbox"/> Regions <input type="checkbox"/> Special	Code: <u>EI 74-2</u> Date: <u>1/2/74</u> Supersedes:
APPROVED: <div style="text-align: center;">  <u>Malcolm D. Graham</u> Deputy Chief Engineer </div>	

Attached to this Engineering Instruction is a copy of Standard Sheet 645-8R1, Standard Regulatory and Warning Signs. This sheet has been revised to accommodate a new system of payment for sign panels and posts as shown in Engineering Bulletin 3-20, dated September 21, 1973.

Under that system, each of the pay items shown on this sheet has an additional three pay items associated with it. These items are designated by placing the numeral 1, 2 or 3 in the fourth decimal place of the item number and call for the addition of a supplementary panel, furnishing and mounting the panel and H-members only, and furnishing and erecting the posts only, respectively. The proper titles for these additional items are contained in the Item Specification Addenda File, however, the proper title for any of these items can be created by adding the following to the basic item title as shown in the Pay Item Catalog:

<u>ITEM NO.</u>	<u>FULL TITLE SUFFIX</u>	<u>ABBREVIATED TITLE SUFFIX</u>
645. ___ 1	With Supplementary Panel	With Supplementary Panel
645. ___ 2	Furnish and Mount Panel Only	Furn & Mount Panel Only
645. ___ 3	Furnish and Erect Post(s) , Only	Furn & Erect Post(s) Only

In addition to this new system of pay items, there have been some additional changes to this standard sheet and the traffic sign pay items. On the standard sheet, several panel sizes have been added to accommodate the Federal MUTCD requirements. These panels are:

<u>ITEM NO.</u>	<u>TITLE</u>	<u>USE</u>
645.2110 (New Item)	Traffic Sign, 24 Inch x 60 Inch	One way sign.
645.2380	Traffic Sign, 30 In. Diamond with 36 In. x 12 In. Rectangle	Alternate 24 x 18 in. panel for use with Merge Sign.
645.2410	Traffic Sign, 36 In. Diamond with 36 In. x 36 In. Rectangle	Alternate 30 x 24 in. panel for use with Merge Sign.
645.2430	Traffic Sign, 48 In. Diamond with 36 In. x 36 In. Rectangle	Alternate 42 x 30 in. panel for use with Merge Sign.

Subject: STANDARD SHEET 645-8R1, STANDARD REGULATORY AND WARNING SIGNS

There are two other new panel shapes required by the Federal MUTCD, the five sided school and school advance signs and the pennant shaped no passing sign. Although these have not been added to the standard sheet, pay items have been created for these signs as shown below and the construction details, as shown in this Engineering Instruction, will have to be added to the plans when these signs are used in the project:

645.2610	Traffic Sign, Five Sided, 30 Inch
645.2620	Traffic Sign, Five Sided, 36 Inch
645.2630	Traffic Sign, Five Sided, 48 Inch
645.2640	Traffic Sign, 36 x 48 x 48 Inch Pennant

Another change shown on this sheet is the change of the pay items for hazard markers. In Engineering Bulletin 3-20, it stated that the items for the Hazard Marker, and the Hazard Marker, Furnish and Mount Panel Only, would be 645.3600 and 645.3602, respectively. These will now be 645.4010 and 645.4012, as shown on the standard sheet, to include them in the general category of Special Signs and Devices.

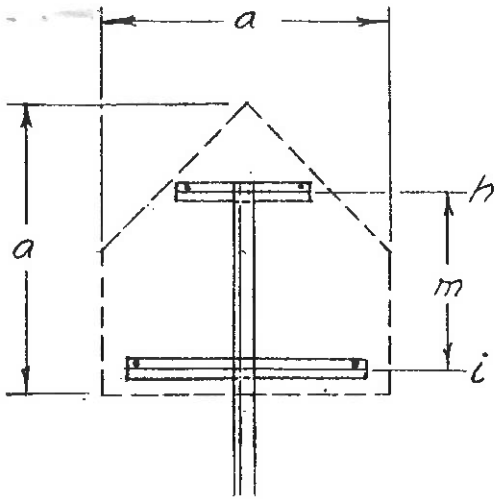
One other change in the system of sign pay items which does not affect this standard sheet, is the addition of pay items for four, five and six panel group route marker assemblies. The following pay items have been added to the Addenda File:

645.2860	Traffic Sign, Route Marker Assembly, Four (4) Panel Groups
645.2870	Traffic Sign, Route Marker Assembly, Five (5) Panel Groups
645.2880	Traffic Sign, Route Marker Assembly, Six (6) Panel Groups

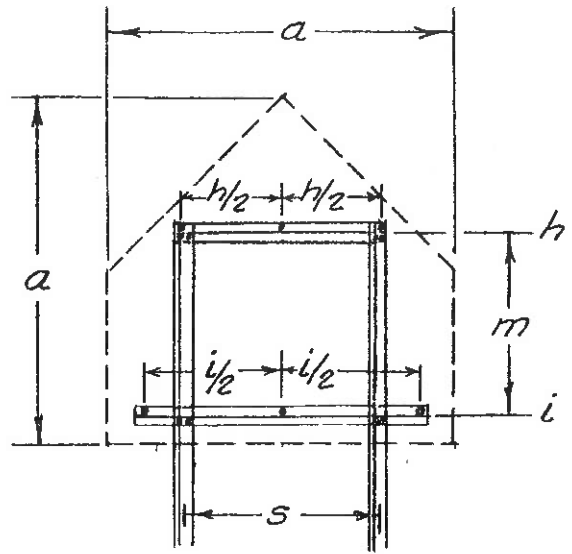
No construction details have been devised for these **route marker** assemblies due to their infrequent use. For that reason, the designer will have to add the details to the plans when these items are used in a project. Due to the size of such an assembly, it may be necessary to use larger posts such as those used for the 36 inch route marker assemblies, and consequently, it will also be necessary to use a slip impact base when the larger posts are used.

If there are any questions regarding the use of this standard sheet or the new pay items, refer them to Mr. Frederick at 457-3696.

MDG:RHF:JK
Attachment



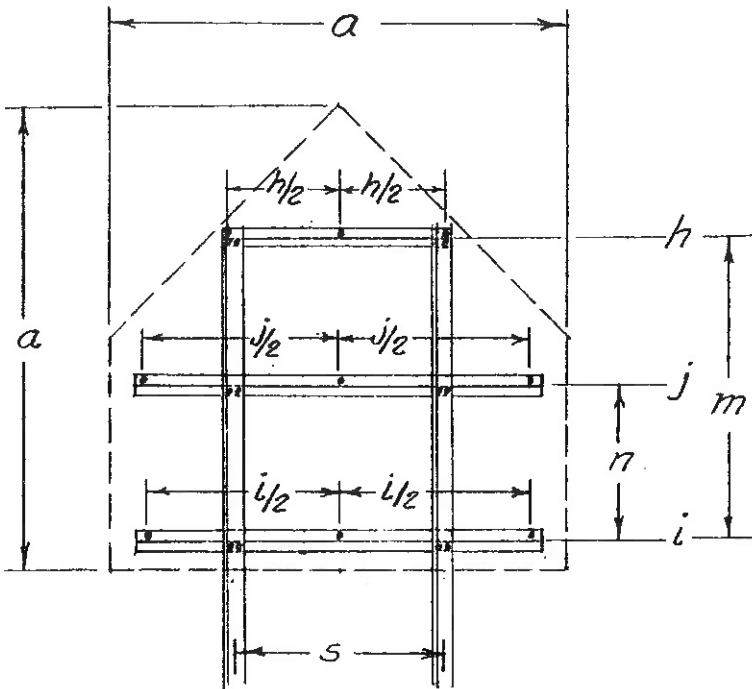
645.2610



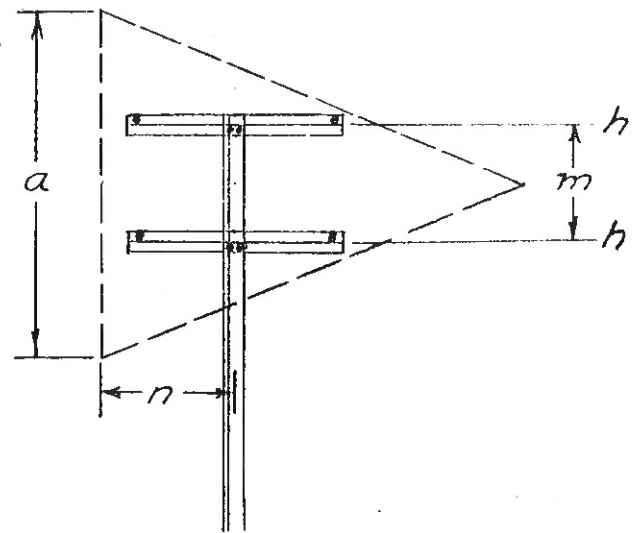
645.2620

Superseded by
EI-74-7

ITEM NO.	a	h	i	j	m	n	No.	s	POSTS		
									A	B	C
645.2910 - 645.2610	30	16	24	-	17	-	1	-	2	3	4
645.2920 - 645.2620	36	23	30	-	19	-	2	22	6	8	10
645.2930 - 645.2630	48	24	42	42	31	16	2	22	7	10	10
645.2940 - 645.2640	36	23	-	-	12	14	1	-	3	4	4



645.2630



645.2640