
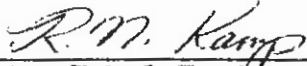


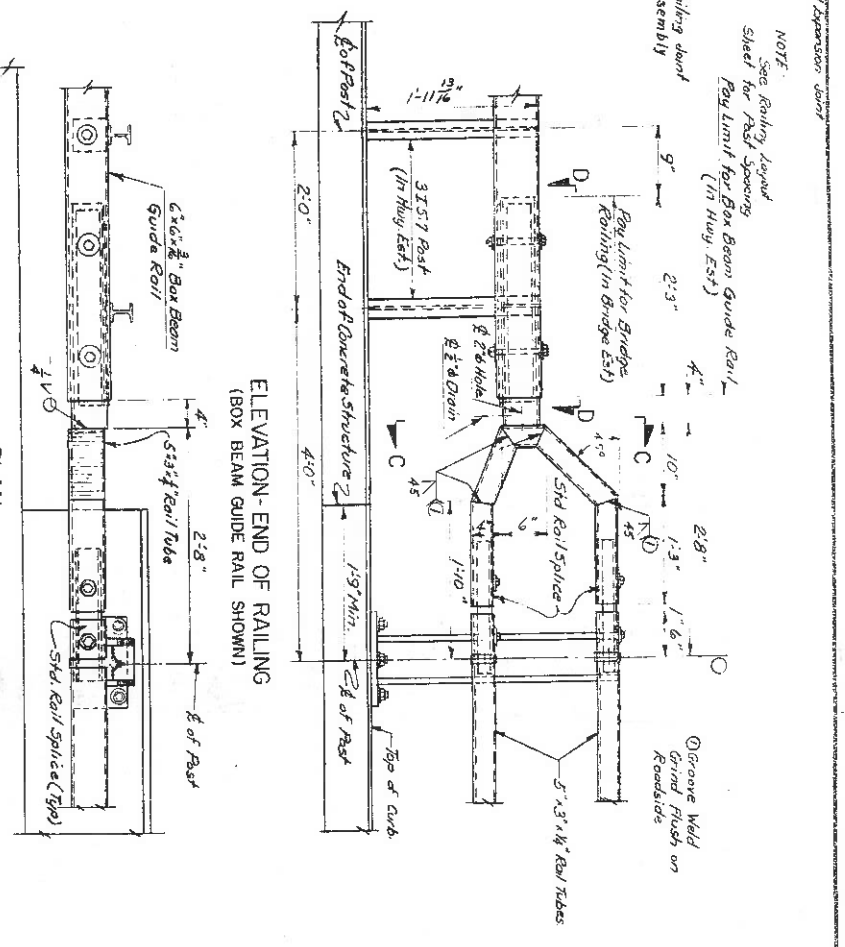
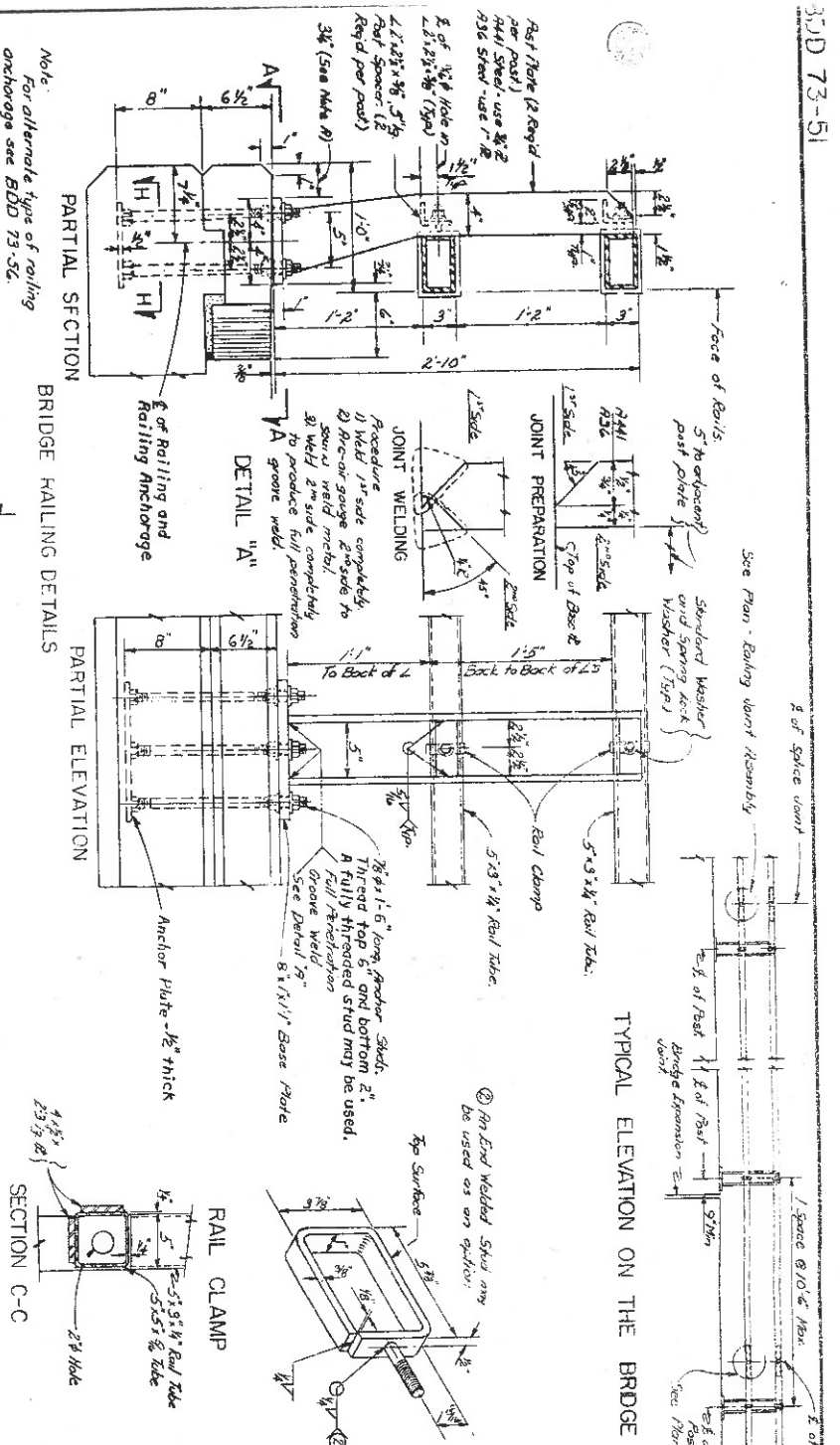
TO:  MAIN OFFICE  REGIONAL OFFICES  <b>SUPERSEDED BY EI 74-089</b> <b>EFFECTIVE 9/23/1974</b>	 <b>ENGINEERING INSTRUCTION</b> NEW YORK STATE DEPARTMENT OF TRANSPORTATION  SUBJECT: BDD 73-51, 73-52 and New BDD 73-56  Subject Code: 7.35-2-51-52-56
Distribution: <input checked="" type="checkbox"/> Main Office <input checked="" type="checkbox"/> Regions <input type="checkbox"/> Special	Code: <u>EI 73-62</u>
APPROVED:   <hr/> Deputy Chief Engineer (Structures)	Date: <u>Aug. 22, 1973</u>  Supersedes: BDD 72-51 and BDD 72-52

Attached are copies of the subject sheets for distribution to your personnel.

The principal change on these sheets is the use of a rail splice at the end of the railing.

BDD 73-56 is a new sheet showing an alternate railing anchor system and is to be used in conjunction with BDD 73-51, 73-52 and 72-53.

*Filed with 55 Sheets*

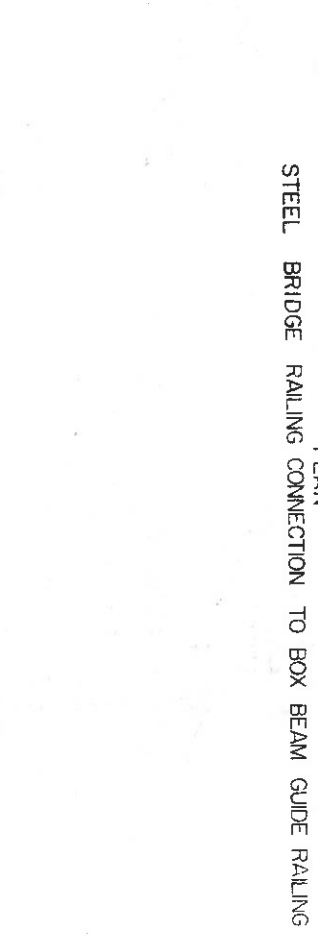
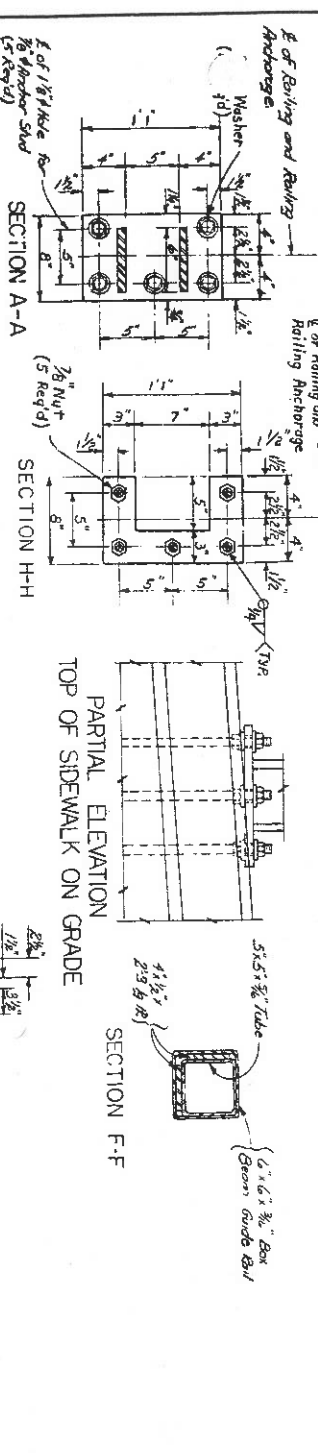


NOTE: The base plates shall be perpendicular to the post unless otherwise noted. When the railing is to be placed on a prepared surface, the base plate may be parallel to the grade or may be perpendicular to the post and made level by the use of level shims. Including this, spacers, base plates, nuts and washers and any necessary shims and aluminum caulking compound shall be paid for under the railing item.

Anchor studs, nuts, washers and anchor plates shall be paid for under the railing item placed and the anchor satisfaction of the Engineer, and the studs shall be cut off 1/8 inch above the nut and permit.

Halls shall span a minimum of 3 posts. It is impossible the absolute minimum shall be two posts with one of these posts being a special railing. Materials used shall be in accordance with the following specifications:

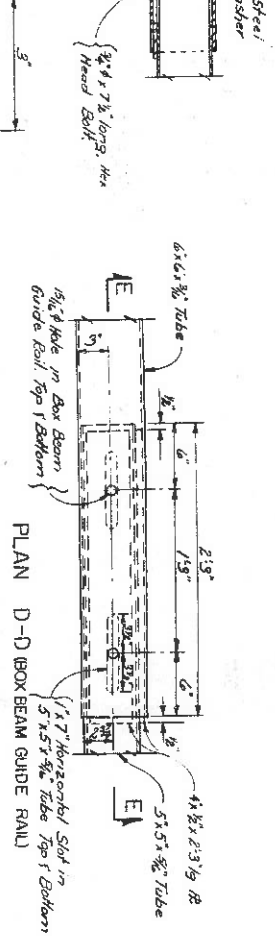
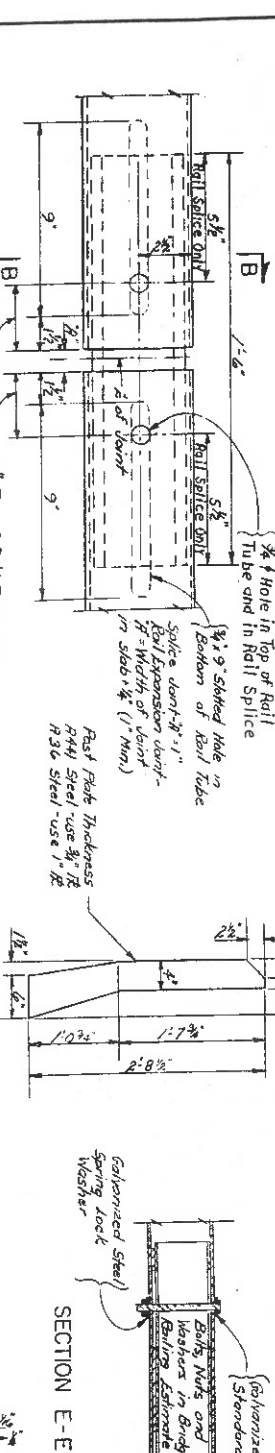
- Steel - ASTM Designation A500 Grade B or A501.
- Hall Clamps and End Caps - ASTM Designation A36.
- Clamp Studs, nuts and washers - ASTM Designation A36.
- Anchor Studs - ASTM Designation A36.
- Anchor Plates - ASTM Designation A36.
- Post Spacers - Same as post plate material.
- Splice Bolts, nuts and washers - ASTM Designation A307.
- Anchor Studs - ASTM Designation A307.
- Nuts & Washers for Anchor Studs - ASTM Designation A307.
- Anchor Plates - ASTM Designation A307.
- Post Web Plates - (If required) - Same as post plate material.
- Plate Spacing Material - ASTM Designation A36.
- Galvanized Steel - All components of the railing including anchor studs, nuts, and washers shall be galvanized in accordance with Material Specification M19. Anchor studs shall have a Class 2A thread fit prior to galvanizing. The end post of rail the anchor studs shall be 1/2\"/>



Grind all edges of Post Plates and Base Plates so that all sharp edges are removed. Railing post shall be erected to proper line and grade before concrete under post and in back of granite curb is poured.

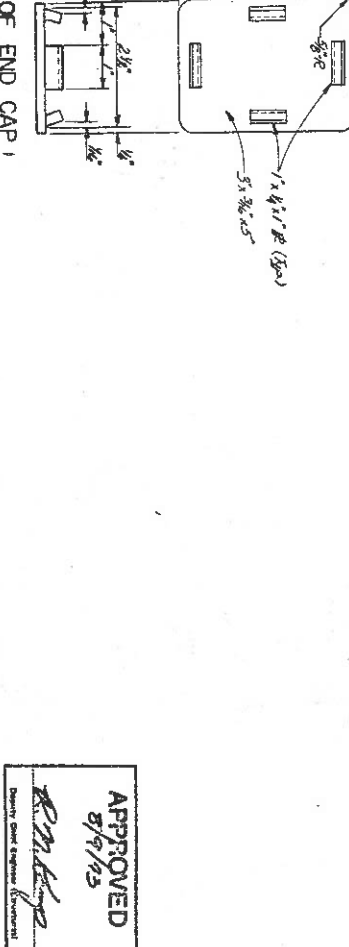
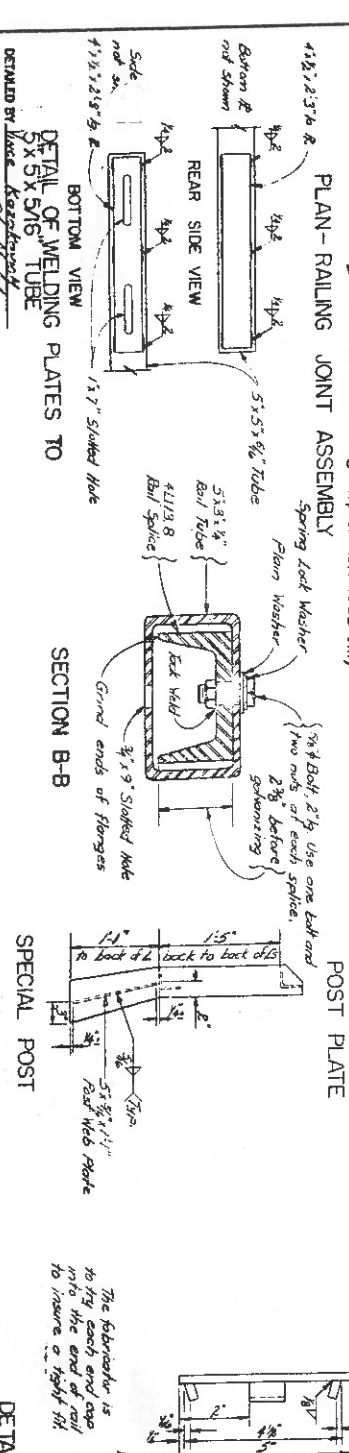
When the railing is to be placed on a prepared surface, the bottom of post or shims (which cover surface) shall be in direct contact with the aluminum caulking compound just prior to the installation of the post.

All bolts shall have a Class 2A thread fit prior to galvanizing.



INSTRUCTIONS TO DESIGNER: Do not place these instructions on the contract plans.

The railing details should clearly show that railing joints are to be placed in the railing panel spanning any transverse joint in the slab subject to deflection caused by live load or impact. The post spacers shall be approximately uniform and as close to 10'-6\"/>



NOTE: The details on this sheet are shown for a railing mounted on a parapet curb on a wall. If mounted on a wall or a parapet curb with different details than those shown, the minimum dimensions shall control. The minimum distance from edge of Railing Post to minimum distance from edge of Railing Post to minimum cover on the Anchor Stud shall be 2\"/>

STATE OF NEW YORK  
DEPARTMENT OF TRANSPORTATION  
DIVISION OF CONSTRUCTION

APPROVED  
8/9/73  
[Signature]

STEEL BRIDGE RAILING - TWO RAIL



