
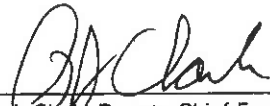


To: SUPERSEDED ^{BY} <i>EB 00-066</i> EFFECTIVE 10/23/00		New York State Department of Transportation ENGINEERING INSTRUCTION	EI 00-024
Title: DETAILS FOR USE WITH TEMPORARY SOIL EROSION AND SEDIMENT CONTROL SPECIFICATION [§ 209]-REVISED			
Distribution: <input type="checkbox"/> Manufacturers (18) <input type="checkbox"/> Surveyors (33) <input checked="" type="checkbox"/> Main Office (30) <input checked="" type="checkbox"/> Consultants (34) <input checked="" type="checkbox"/> Local Govt. (31) <input checked="" type="checkbox"/> Contractors (39) <input checked="" type="checkbox"/> Regions/Agencies (32)		Approved:  P.J. Clark, Deputy Chief Engineer (Facilities Design) 07/17/00 Date 	

This Engineering Instruction (EI) supersedes Appendix B Chapter 8 of the Highway Design Manual.

EFFECTIVE DATE. The details transmitted herewith are effective with the January 11, 2001 letting.

BACKGROUND. These revisions to the originally issued details are a result of the Quality Assurance visits which were conducted by the Landscape Architecture Bureau and Environmental Analysis Bureau.

PURPOSE. This instruction issues minor changes to the originally issued details as well as a new detail for a Sand/Gravel Bag Check Dam.

DESIGNER INFORMATION. The details illustrated in this EI should be incorporated in contract documents when using the Standard Specification Section 209 pay items. These details are provided in the nydetls.cel. cell library. Refer to EI 00-015 "CADD File Format and Transfer Requirements" for guidance regarding the location and availability of New York State Department of Transportation's Standard Cell Libraries. It is intended that these details become the standard to use for each specified item number. If a Region needs to make minor revisions to accommodate specific needs, they should be done at the project level for a specific PIN only.

These details will ultimately reside in Chapter 8 of the Highway Design Manual.

CONTACT. Questions regarding this Engineering Instruction should be directed to Gary Glath in the Landscape Architecture Bureau. He may be reached at (518) 457-4460.

FIGURE 8-8 CHECK DAM (STONE) ITEM 209.0401NN M

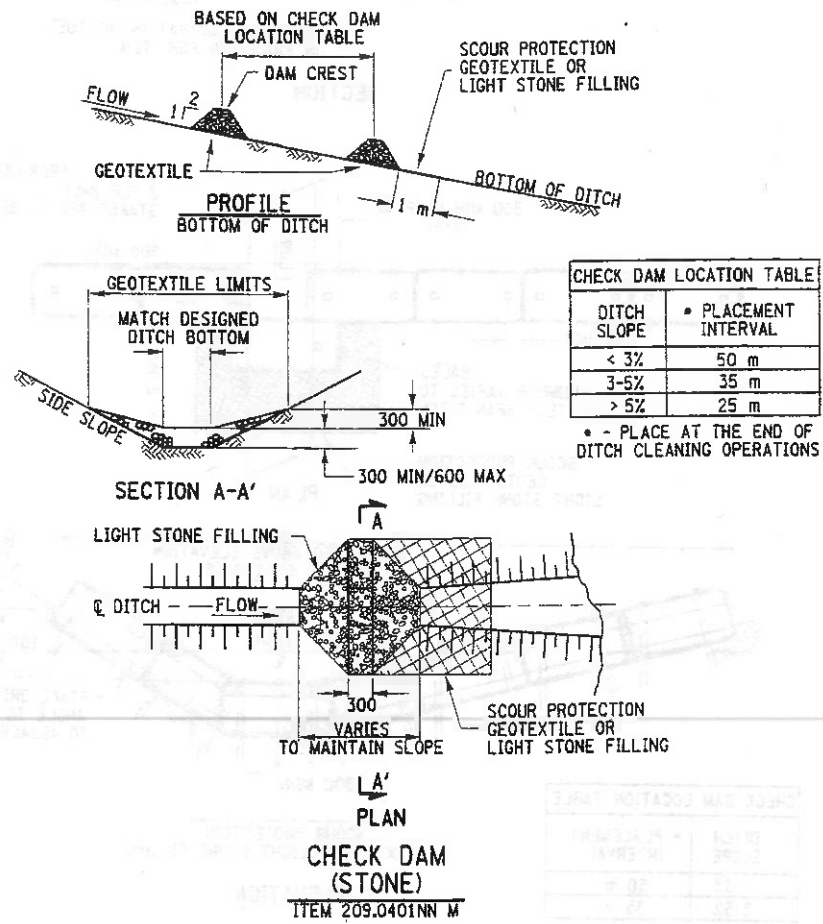
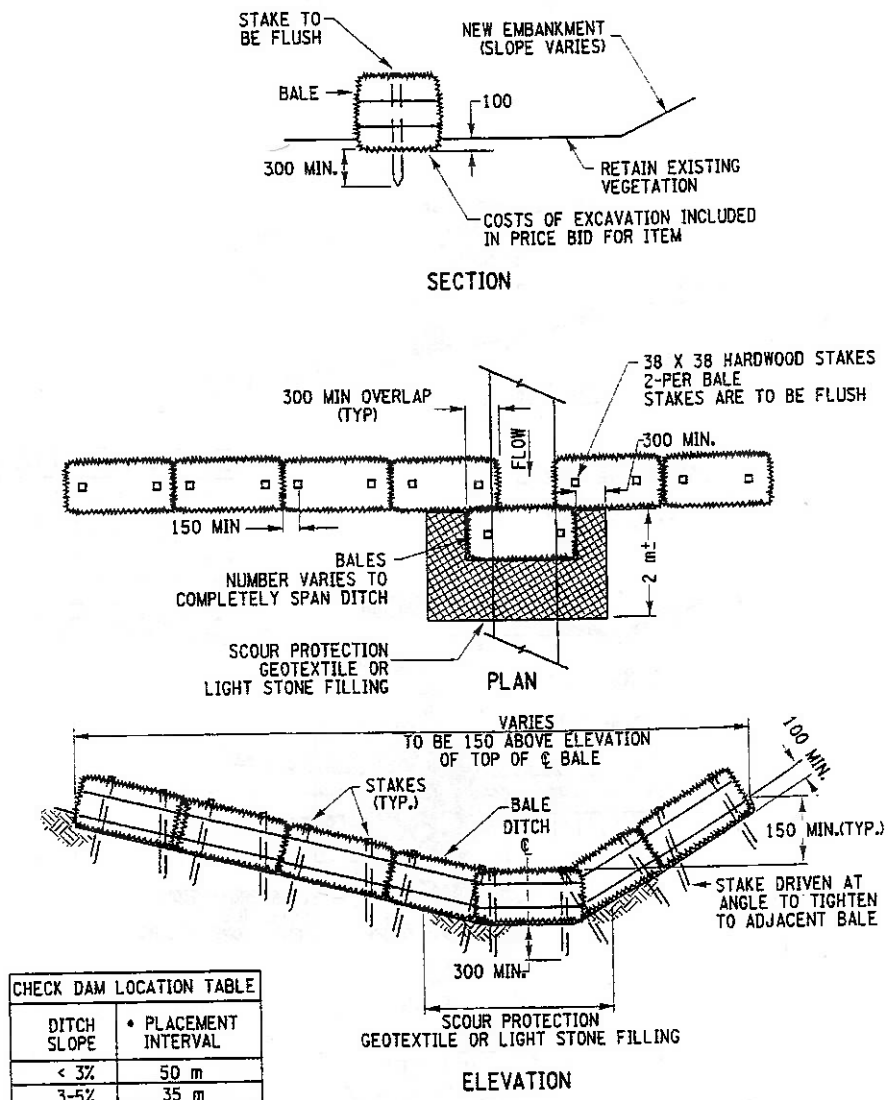


FIGURE 8-9 CHECK DAM (HAYBALE/STRAWBALE) ITEM 209.0402 M



DITCH SLOPE	• PLACEMENT INTERVAL
< 3%	50 m
3-5%	35 m
> 5%	25 m

• - PLACE AT THE END OF DITCH CLEANING OPERATIONS

**CHECK DAM
(HAYBALE/STRAWBALE)**
ITEM 209.0402 M

APPENDIX B- HIGHWAY DRAINAGE

FIGURE 8-10 CHECK DAM (SILT FENCE) ITEM 209.0403 M

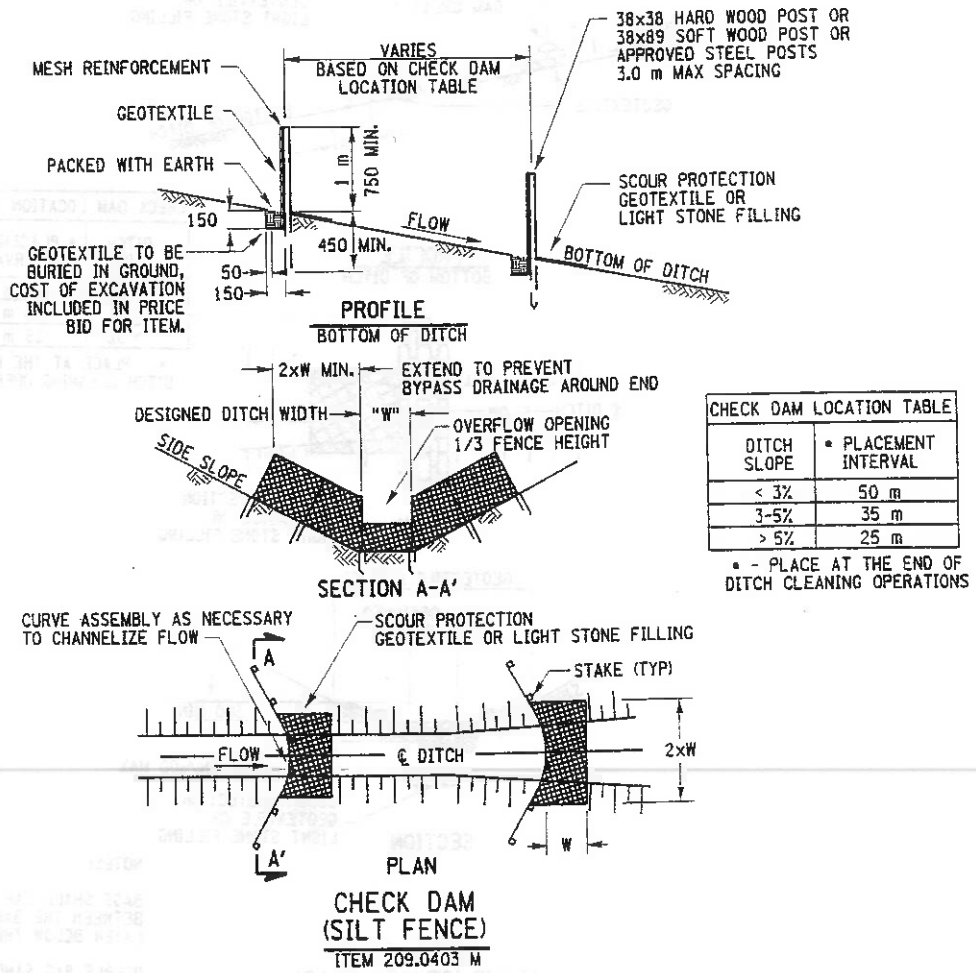
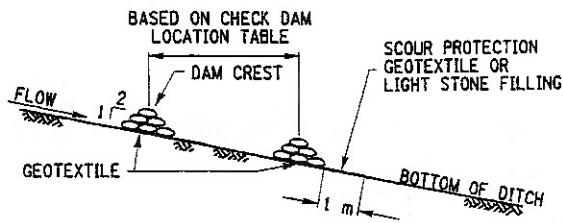


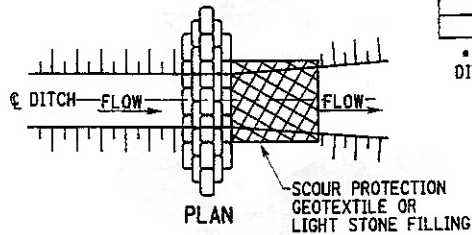
FIGURE 8-11 CHECK DAM (SAND/GRAVEL) ITEM 209.0404 M



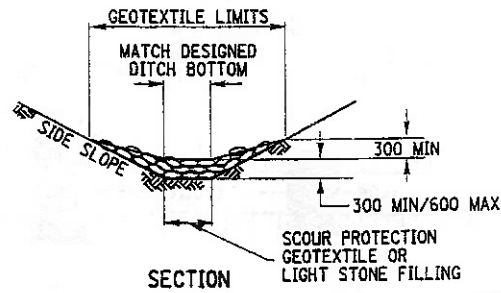
CHECK DAM LOCATION TABLE	
DITCH SLOPE	PLACEMENT INTERVAL
< 3%	50 m
3-5%	35 m
> 5%	25 m

• - PLACE AT THE END OF DITCH CLEANING OPERATIONS

PROFILE
BOTTOM OF DITCH



PLAN
SCOUR PROTECTION
GEOTEXTILE OR
LIGHT STONE FILLING



SECTION
SCOUR PROTECTION
GEOTEXTILE OR
LIGHT STONE FILLING

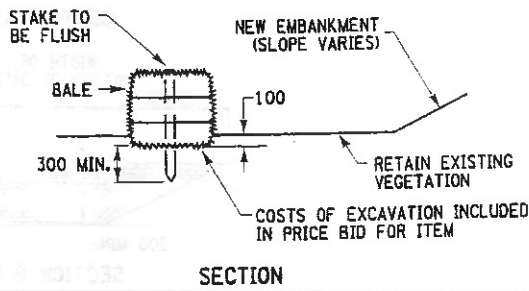
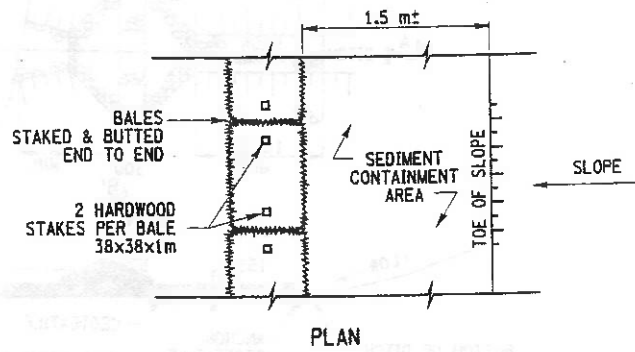
CHECK DAM
(SAND/GRAVEL BAG)
ITEM 209.0404 M

NOTES:

BAGS SHALL LAP THE JOINTS BETWEEN THE BAGS IN THE LAYER BELOW THEM.

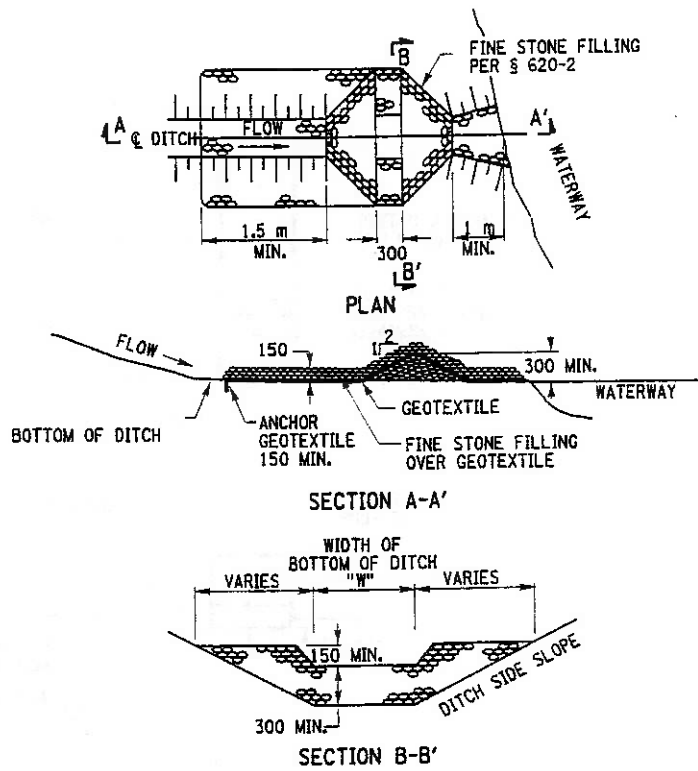
DOUBLE BAG SAND/GRAVEL, INVERSELY INSERT AND EACH BAG INDIVIDUALLY TIED.

FIGURE 8-12 HAYBALE/STRAWBALE ITEM 209.05 M



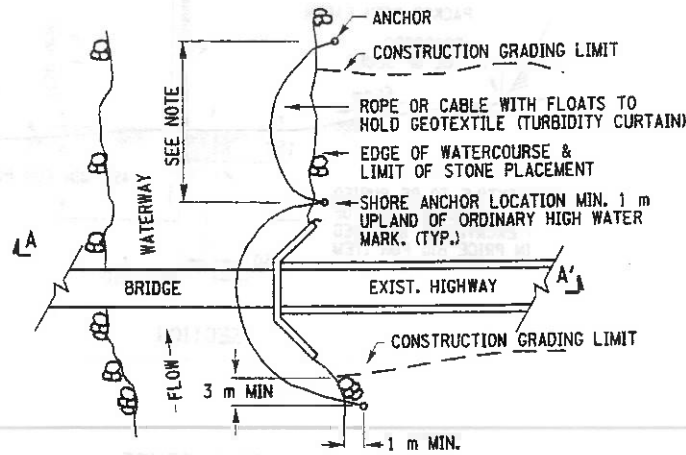
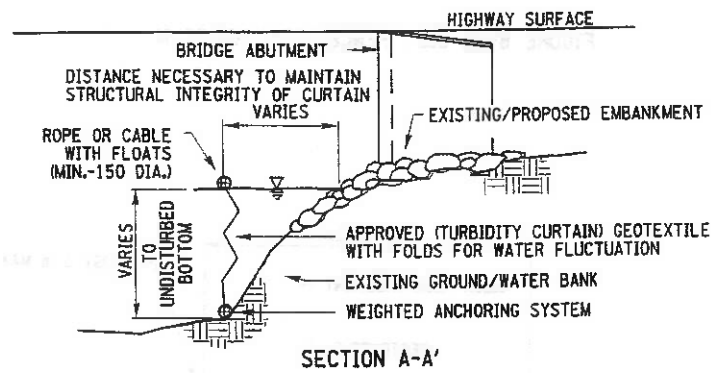
HAYBALE/STRAWBALE
ITEM 209.05 M

FIGURE 8-13 SEDIMENT TRAP (DITCH) ITEM 209.06NN M



SEDIMENT TRAP (DITCH)
ITEM 209.06NN M

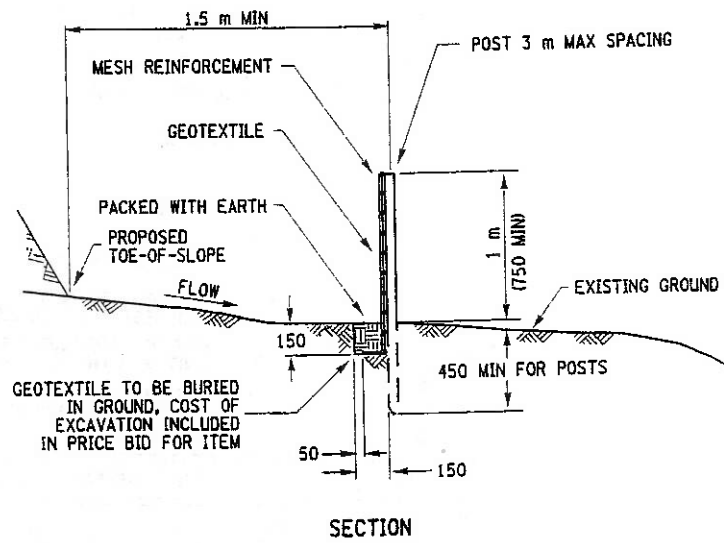
FIGURE 8-14 TURBIDITY CURTAIN ITEM 209.07 M



NOTE:
 30 m MAXIMUM FOR EACH SECTION OF CURTAIN
 REQUIRED. LAST SECTION SHALL TERMINATE 3 m
 BEYOND THE CONSTRUCTION GRADING LIMIT LINE.

PLAN
 TURBIDITY CURTAIN
 ITEM 209.07 M

FIGURE 8-15 SILT FENCE ITEM 209.08 M



SILT FENCE
ITEM 209.08 M