
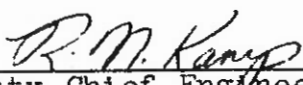


TO: MAIN OFFICE REGIONAL OFFICES SUPERSEDED BY EB 97-020 EFFECTIVE 4/4/1997	 ENGINEERING INSTRUCTION NEW YORK STATE DEPARTMENT OF TRANSPORTATION
	SUBJECT: BR 130 and BR 131 Subject Code: 7.35-1-130, 131
Distribution: <input checked="" type="checkbox"/> Main Office <input checked="" type="checkbox"/> Regions <input type="checkbox"/> Special APPROVED:  Deputy Chief Engineer (Structures)	Code: <u>EI 73-42</u> Date: <u>June 12, 1973</u> Supersedes: BR 130 Dated Jan. 1973

Attached are copies of the subject sheets for distribution to your personnel. The principal changes on these sheets are listed below.

BR 130:

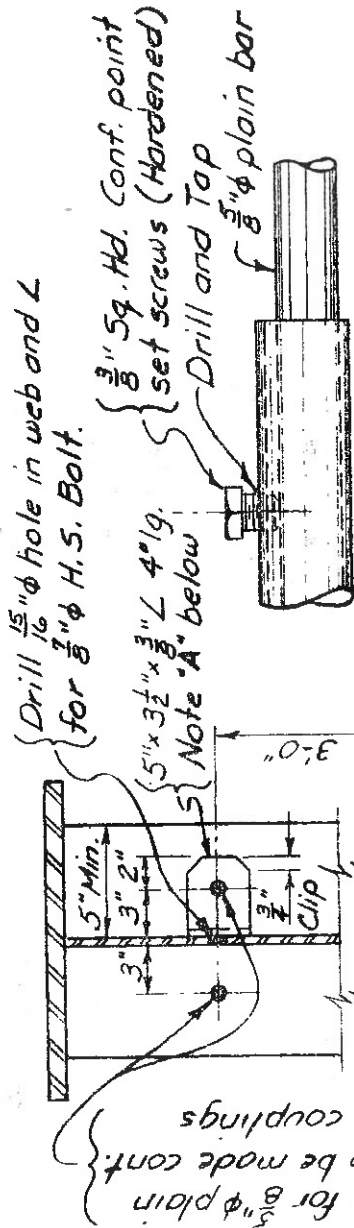
1. The length of the coupling has been changed from 8" to 1'-0".
2. A set screw is used instead of a cap screw.

BR 131:

A new sheet, showing details for Shop Erected Safety Handrail.

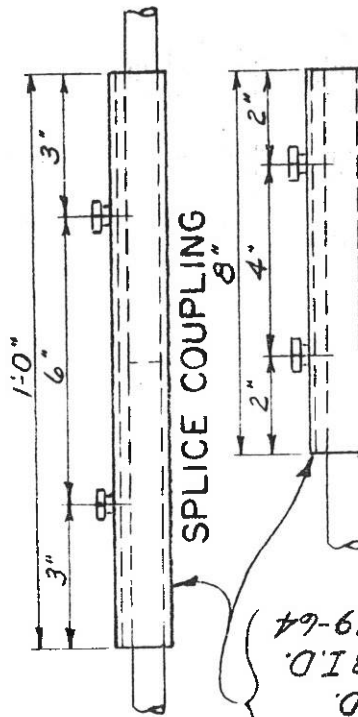
The use of these revised details is effective immediately, and shall also be used on structures already detailed, if the changes can be made without extensive revisions.

Handrail shall be placed thru stiffeners on both sides of Interior Stringers and thru stiffeners on inside face of Fascia Stringers. The cost of furnishing and placing the bar couplings, cap screws, H.S. bolts and Clip Angles shall be paid for under Item 29. Use handrail when web depth is 48" or greater.



DETAIL AT CAP SCREW

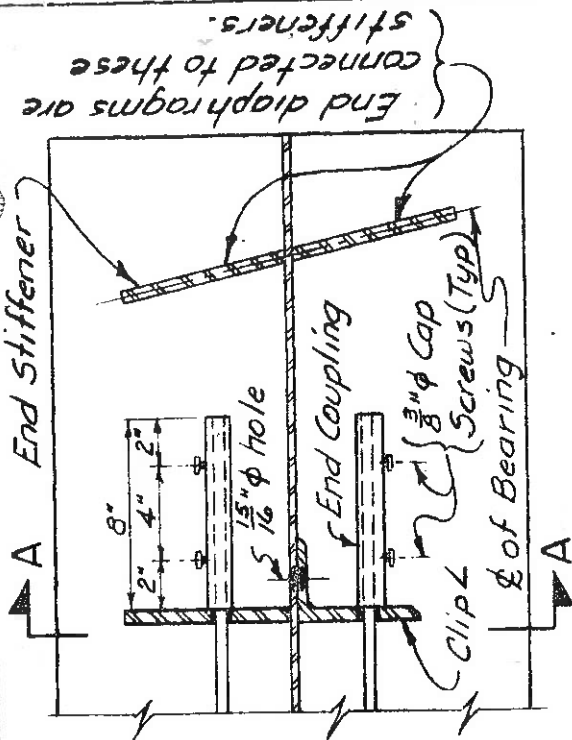
SECTION A-A



Round Mechanical Tubing - Carbon Steel, 1 1/8" O.D. 3/2 wall, 668 I.D. ASTM A519-64

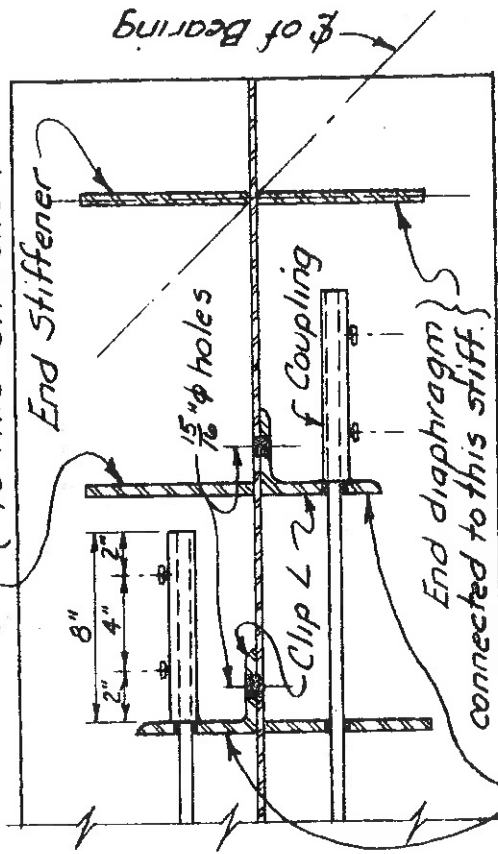
END COUPLING

Note "A" - Use clip angle between stiffeners if stiffener spacing is 8'-0" or greater.



PARTIAL PLAN - SKEW UP TO 30°

End diaphragm connected to this stiffener.



Provide a clip angle if a full depth stiff. is not required at this location.
PARTIAL PLAN - SKEW OVER 30°

June '73

R Dillon
BR 130

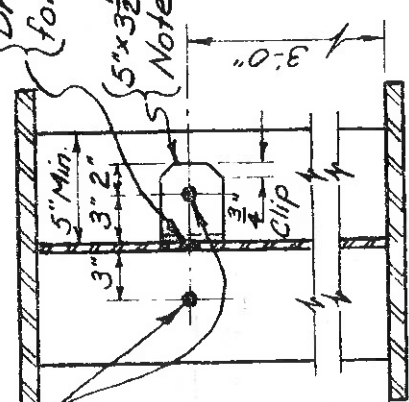
Handrail shall be placed thru stiffeners on both sides of Interior Stringers and thru stiffeners on inside face of Fascia Stringers.

The cost of furnishing and placing the bar, bar splices, $\frac{3}{4}$ " nuts, H.S. Bolts and Clip Angles shall be paid for under Item 29.

Use handrail when web depth is 48" or greater.

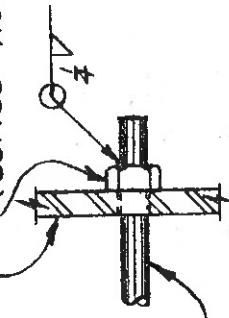
Drill $\frac{15}{16}$ " ϕ hole in web and L for $\frac{1}{2}$ " ϕ H.S. Bolt.

$5 \times 3 \frac{1}{2} \times \frac{3}{8}$ " L 4" lg. Note "A" below

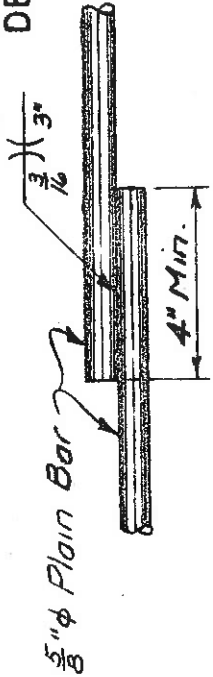


SECTION A-A
 $\frac{5}{8}$ " ϕ Plain Bar

Stiffener or Clip L
($\frac{3}{4}$ " ϕ nut regular or heavy series - not heat treated.)



END CONNECTION DETAIL

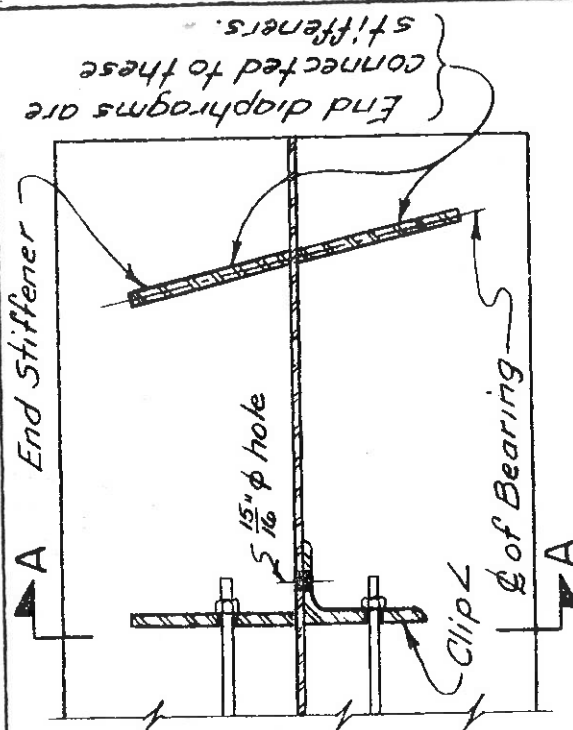


WELDED SPLICE DETAIL

R. Dillon

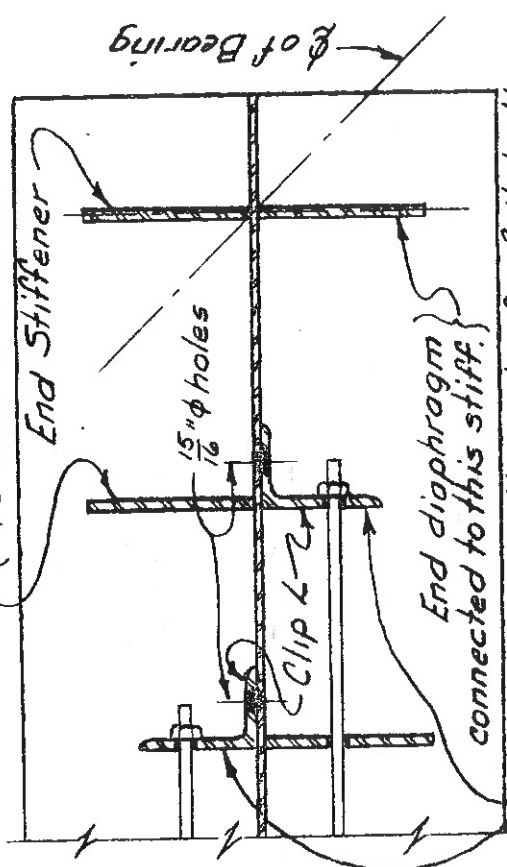
BR 131

June '73



PARTIAL PLAN - SKEW UP TO 30°

(End diaphragm connected to this stiffener.)



PARTIAL PLAN - SKEW OVER 30°

Note "A" - Use clip angle between stiffeners if ϕ stiffener spacing is 8'-0" or greater. Provide a clip angle if a full depth stiff is not required at this location.

End diaphragms are connected to these stiffeners.