

*Bar*

RECEIVED  
DESIGN QUALITY  
ASSURANCE BUREAU  
FEB 17 1993

**SUPERSEDED BY EB 02-019  
EFFECTIVE 9/12/02**

# ENGINEERING INSTRUCTION

NEW YORK STATE DEPARTMENT OF TRANSPORTATION

**SUBJECT: ALTERNATE 3/4"  $\phi$  ANCHOR RODS FOR  
CORRUGATED BEAM GUIDE RAILING AND  
CORRUGATED BEAM MEDIAN BARRIER**

Subject Code: 7.27-2-606-6R3; 606-7R2

Distribution:  
30 Main Office      32 Regions      34 Consultant

Code: 93-3  
Date: 2/10/93  
Supersedes:

APPROVED:  
  
J. R. LAMBERT, Deputy Chief Engineer (Fac. Des. Div.)

Attached is a proposal insert titled "Corrugated Beam Guide Railing - Corrugated Beam Median Barrier".

On Standard Sheet 606-6R3 "Corrugated Beam Guide Railing" and Standard Sheet 606-7R2 "Corrugated Beam Median Barrier" there is a detail titled "Alternate 3/4"  $\phi$  Anchor Rod". This detail shows a 22" long fully threaded 3/4"  $\phi$  anchor rod. We have modified this anchor rod so that only the top 4" needs to be threaded. As this proposal insert modifies Standard Sheet 606-3R3 and Standard Sheet 606-7R2 it should be placed with your copy of these sheets for reference.

This modification will take effect with the letting of May 16, 1993.

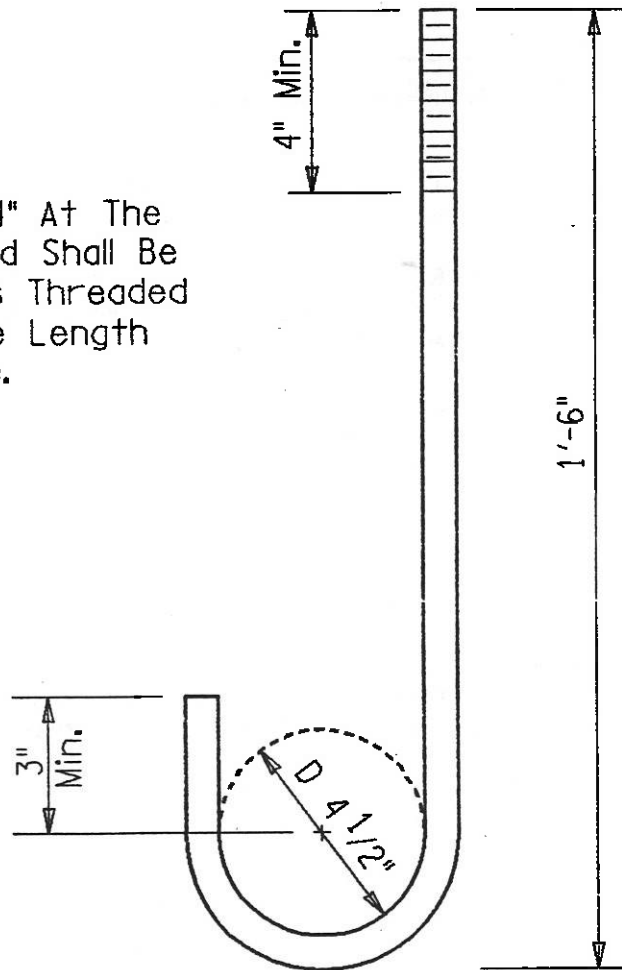
If you have any questions concerning this modification of the standard sheets for Corrugated Beam Guide Railing and Corrugated Beam Median Barrier you may call W. E. Hopkins at (518) 457-6399.

# CORRUGATED BEAM GUIDE RAILING CORRUGATED BEAM MEDIAN BARRIER

On Standard Sheet 606-6R3 And Standard  
Sheet 606-7R2 DELETE The Detail Titled  
"Alternate  $3/4"$   $\varnothing$  Anchor Rod Detail" And  
Substitute The Following:

**Note:**

A Minimum Of 4" At The  
Top Of The Rod Shall Be  
Threaded. Rods Threaded  
For The Entire Length  
Are Acceptable.



## ALTERNATE $3/4"$ $\varnothing$ ANCHOR ROD DETAIL

ASTM A307  
GRADE C