


MODIFIED BY EI 95-030 EFFECTIVE 7/18/95	<h1>ENGINEERING INSTRUCTION</h1> <p>NEW YORK STATE DEPARTMENT OF TRANSPORTATION</p>	
SUPERSEDED BY EB 96-032 EFFECTIVE 7/19/96	SUBJECT: DISTRIBUTION OF AN ADDITIONAL DETAIL FOR BRIDGE DESIGN DATA SHEETS BDD 89-51 AND BDD 89-59B - DESIGN CRITERIA FOR BRIDGES Subject Code: 7.35-4-568	
Distribution: 30 Main Office 32 Regions 34 Special		Code: <u>E.I. 89-17</u>
APPROVED:  <u>A. M. SHIROLE, Deputy Chief Engineer (Structures)</u>		Date: <u>5/31/89</u> Supersedes:

The purpose of this E. I. is to distribute a detail titled "SPlice DETAIL AT TURN BACK IN LOWER TRANSITION GUIDE RAIL" that was inadvertently omitted from the recently issued Bridge Design Data Sheets BDD 89-51, titled "STEEL BRIDGE RAIL - TWO RAIL (FOR USE ON CURBLESS BRIDGES ONLY)" and BDD 89-59B, titled "STEEL BRIDGE RAILING - TWO RAIL (FOR USE ON BRUSH CURBS ONLY) Sheet 2 of 2".

A copy of the detail (attached) should be attached to your existing BDD 89-51 and BDD 89-59B for future reference.

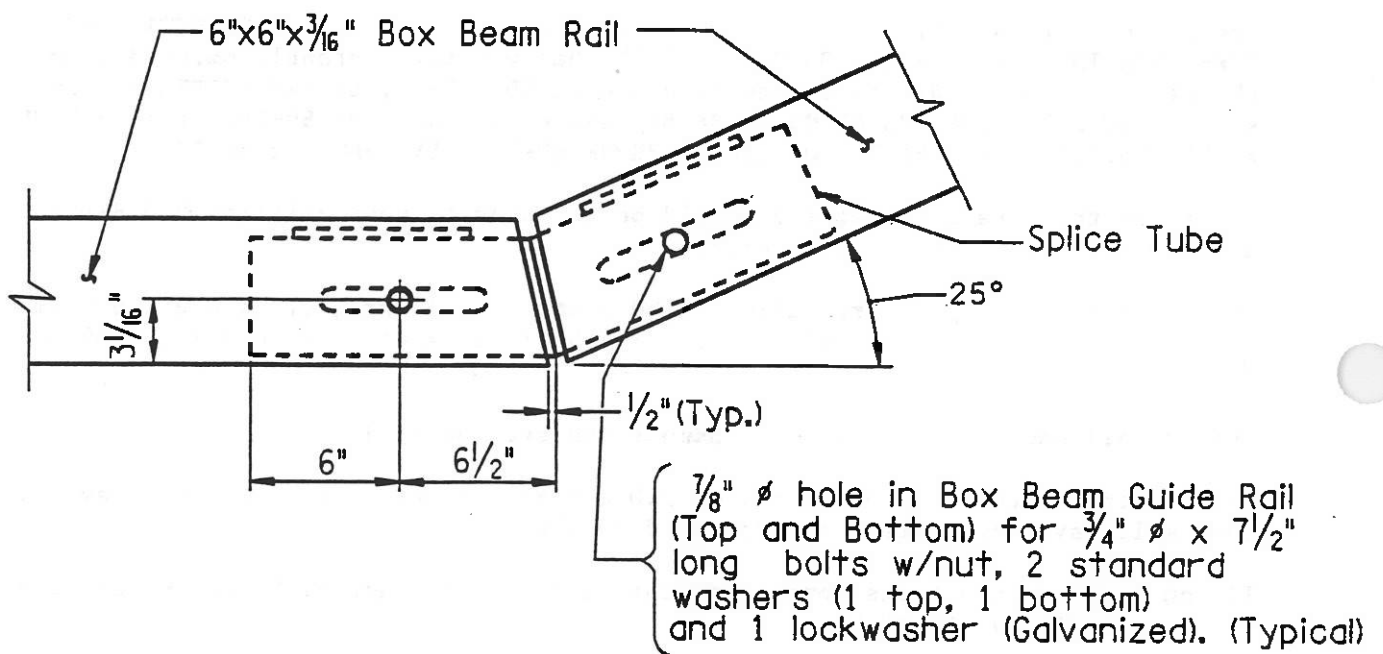
This detail shall be incorporated in the plans for all projects where two rail steel bridge rail is used, effective with the letting date of July 13, 1989 (June 23, 1989 PS&E).

This detail should be added by amendment whenever possible.

Any "insert" sheets for BDD 89-51 or BDD 89-59B obtained from CAD after May 15, 1989 will have this detail incorporated on them.

If you have any questions concerning this subject, contact R. Marchione or L. N. Johanson at (518) 457-8929.

SPlice DETAIL AT TURN BACK IN
LOWER TRANSITION GUIDE RAIL



SPLICE DETAIL AT TURN BACK IN LOWER TRANSITION GUIDE RAIL